

Atg4D Polyclonal Antibody

Description

Product type	Primary Antibody
Code	BT-AP00718
Host	Rabbit
Isotype	IgG
Size	20ul, 50ul, 100ul
Immunogen	Synthesized peptide derived from the Internal region of human Atg4D.
Mol wt	52922
Species reactivity	Human
Clonality	Polyclonal
Recommended application	WB, IHC-p, ELISA
Concentration	1 mg/ml
Full name	Atg4D Antibody
Synonyms	ATG4D; APG4D; AUTL4; Cysteine protease ATG4D; AUT-like 4 cysteine endopeptidase; Autophagin-4; Autophagy-related cysteine endopeptidase 4; Autophagy-related protein 4 homolog D

This product is for research use only, not for use in human, therapeutic or diagnostic procedure.

Background

Autophagy is the process by which endogenous proteins and damaged organelles are destroyed intracellularly. Autophagy is postulated to be essential for cell homeostasis and cell remodeling during differentiation, metamorphosis, non-apoptotic cell death, and aging. Reduced levels of autophagy have been described in some malignant tumors, and a role for autophagy in controlling the unregulated cell growth linked to cancer has been proposed. ATG4D (autophagy related 4D cysteine peptidase) belongs to the autophagy-related protein 4 (Atg4) family of C54 endopeptidases. Members of this family encode proteins that play a role in the biogenesis of autophagosomes, which sequester the cytosol and organelles for degradation by lysosomes. Alternative splicing results in multiple transcript variants.

Recommended Dilution

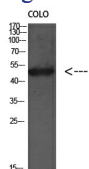
WB: 1: 500 - 1: 2000

IHC: 1: 100 - 1: 300

ELISA: 1: 5000

Not yet tested in other applications.

Images



Western Blot analysis of Colo using Antibody diluted at 1:1000. Secondary antibody was diluted at 1:20000

Storage

-20°C for one year