

ATP5A Polyclonal Antibody

Description

Product type	Primary Antibody
Code	BT-AP00733
Host	Rabbit
Isotype	IgG
Size	20ul, 50ul, 100ul
Immunogen	The antiserum was produced against synthesized peptide derived from human ATP5A1. AA range:201-250
Mol wt	59751
Species reactivity	Human, Mouse, Rat
Clonality	Polyclonal
Recommended application	WB, IHC-p, ELISA
Concentration	1 mg/ml
Full name	ATP5A Antibody
Synonyms	ATP5A1; ATP5A; ATP5AL2; ATPM; ATP synthase subunit alpha; mitochondrial

This product is for research use only, not for use in human, therapeutic or diagnostic procedure.

Background

ATP5A1 encodes a subunit of mitochondrial ATP synthase. Mitochondrial ATP synthase catalyzes ATP synthesis, using an electrochemical gradient of protons across the inner membrane during oxidative phosphorylation. ATP synthase is composed of two linked multi-subunit complexes: the soluble catalytic core, F1, and the membrane-spanning component, Fo, comprising the proton channel. The catalytic portion of mitochondrial ATP synthase consists of 5 different subunits (alpha, beta, gamma, delta, and epsilon) assembled with a stoichiometry of 3 alpha, 3 beta, and a single representative of the other 3. The proton channel consists of three main subunits (a, b, c). ATP5A1 encodes the alpha subunit of the catalytic core. Alternatively spliced transcript variants encoding the different isoforms have been identified. Pseudogenes of this gene are located on chromosomes 9, 2, and 16.

Recommended Dilution

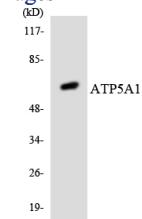
WB: 1: 500 - 1: 2000

IHC: 1: 100 - 1: 300

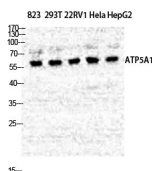
ELISA: 1: 40000

Not yet tested in other applications.

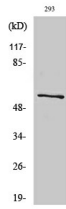
Images



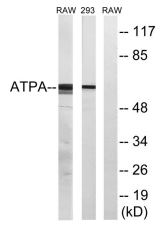
Western blot analysis of the lysates from HT-29 cells using ATP5A1 antibody.



Western Blot analysis of various cells using ATP5A Polyclonal Antibody diluted at 1:500



Western Blot analysis of RAW264.7 cells using ATP5A Polyclonal Antibody diluted at 1:500



Western blot analysis of lysates from 293 and RAW264.7 cells, using ATP5A1 Antibody. The lane on the right is blocked with the synthesized peptide.

Storage

-20°C for one year

501 Changsheng S Rd, Nanhu Dist, Jiaxing, Zhejiang, China

Tel: 86 21 31007137 | E-mail: save@bt-laboratory.com | www.bt-laboratory.com