

ATPAF2 Polyclonal Antibody

Description

Product type	Primary Antibody
Code	BT-AP00749
Host	Rabbit
Isotype	IgG
Size	20ul, 50ul, 100ul
Immunogen	The antiserum was produced against synthesized peptide derived from human ATPAF2. AA range:21-70
Mol wt	32772
Species reactivity	Human, Mouse
Clonality	Polyclonal
Recommended application	WB, ELISA
Concentration	1 mg/ml
Full name	ATPAF2 Antibody
Synonyms	ATPAF2; ATP12; LP3663; ATP synthase mitochondrial F1 complex assembly factor 2; ATP12 homolog

This product is for research use only, not for use in human, therapeutic or diagnostic procedure.

Background

ATPAF2 encodes an assembly factor for the F (1) component of the mitochondrial ATP synthase. This protein binds specifically to the F1 alpha subunit and is thought to prevent this subunit from forming nonproductive homooligomers during enzyme assembly. This gene is located within the Smith-Magenis syndrome region on chromosome 17. An alternatively spliced transcript variant has been described, but its biological validity has not been determined.

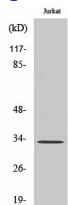
Recommended Dilution

WB: 1: 500 - 1: 2000

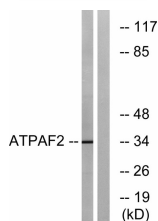
ELISA: 1: 40000

Not yet tested in other applications.

Images



Western Blot analysis of various cells using ATPAF2 Polyclonal Antibody



Western blot analysis of lysates from Jurkat cells, using ATPAF2 Antibody. The lane on the right is blocked with the synthesized peptide.

Storage

-20°C for one year

501 Changsheng S Rd, Nanhu Dist, Jiaxing, Zhejiang, China

Tel: 86 21 31007137 | E-mail: save@bt-laboratory.com | www.bt-laboratory.com