

ATPBD3 Polyclonal Antibody

Description

Product type	Primary Antibody
Code	BT-AP00750
Host	Rabbit
Isotype	IgG
Size	20ul, 50ul, 100ul
Immunogen	The antiserum was produced against synthesized peptide derived from human ATPBD3. AA range:291-340
Mol wt	36450
Species reactivity	Human
Clonality	Polyclonal
Recommended application	WB, ELISA
Concentration	1 mg/ml
Full name	ATPBD3 Antibody
Synonyms	CTU1; ATPBD3; NCS6; Cytoplasmic tRNA 2-thiolation protein 1; ATP-binding domain-containing protein 3; Cancer-associated gene protein; Cytoplasmic tRNA adenylyltransferase 1

This product is for research use only, not for use in human, therapeutic or diagnostic procedure.

Background

CTU1 (cytosolic thiouridylase subunit 1), also known as ATPBD3 (ATP-binding domain-containing protein 3) or NCS6, is a 348 amino acid protein that is encoded by a gene which maps to chromosome 19. Chromosome 19, which consists of over 63 million bases, houses approximately 1,400 genes and is recognized for having the greatest gene density of the human chromosomes. It is the genetic home for a number of immunoglobulin (Ig) superfamily members, including the killer cell and leukocyte Ig-like receptors, a number of ICAMs, the CEACAM and PSG family and Fc receptors (FcRs). Key genes for eye color and hair color also map to chromosome 19.

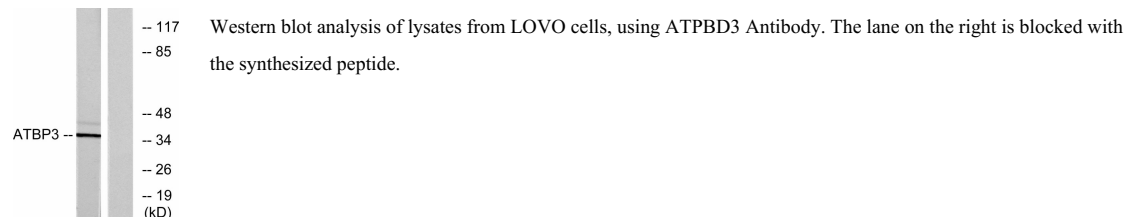
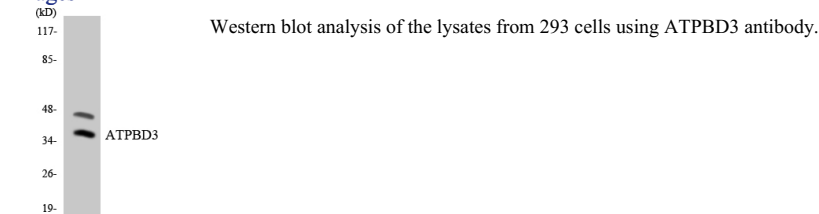
Recommended Dilution

WB: 1: 500 - 1: 2000

ELISA: 1: 20000

Not yet tested in other applications.

Images



Storage

-20°C for one year

501 Changsheng S Rd, Nanhu Dist, Jiaxing, Zhejiang, China

Tel: 86 21 31007137 | E-mail: save@bt-laboratory.com | www.bt-laboratory.com