

## ATP-citrate synthase Polyclonal Antibody

### Description

|                                |   |
|--------------------------------|---|
| <b>Product type</b>            | Primary Antibody  |
| <b>Code</b>                    | BT-AP00751  |
| <b>Host</b>                    | Rabbit  |
| <b>Isotype</b>                 | IgG   |
| <b>Size</b>                    | 20ul, 50ul, 100ul   |
| <b>Immunogen</b>               | The antiserum was produced against synthesized peptide derived from human ATP-Citrate Lyase. AA range:420-469 |
| <b>Mol wt</b>                  | 120839  |
| <b>Species reactivity</b>      | Human, Mouse, Rat, Monkey   |
| <b>Clonality</b>               | Polyclonal  |
| <b>Recommended application</b> | WB, IF, ELISA   |
| <b>Concentration</b>           | 1 mg/ml   |
| <b>Full name</b>               | ATP-citrate synthase Antibody   |
| <b>Synonyms</b>                | ACLY; ATP-citrate synthase; ATP-citrate; pro-S-)lyase; ACL; Citrate cleavage enzyme                           |

**This product is for research use only, not for use in human, therapeutic or diagnostic procedure.**

### Background

ATP citrate lyase is the primary enzyme responsible for the synthesis of cytosolic acetyl-CoA in many tissues. The enzyme is a tetramer (relative molecular weight approximately 440,000) of apparently identical subunits. It catalyzes the formation of acetyl-CoA and oxaloacetate from citrate and CoA with a concomitant hydrolysis of ATP to ADP and phosphate. The product, acetyl-CoA, serves several important biosynthetic pathways, including lipogenesis and cholesterogenesis. In nervous tissue, ATP citrate-lyase may be involved in the biosynthesis of acetylcholine. Multiple transcript variants encoding distinct isoforms have been identified for ACLY.

### Recommended Dilution

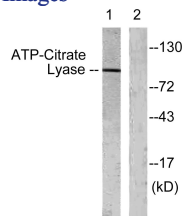
WB: 1: 500 - 1: 2000

IF: 1: 200 - 1: 1000

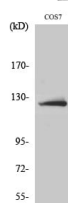
ELISA: 1: 10000

Not yet tested in other applications.

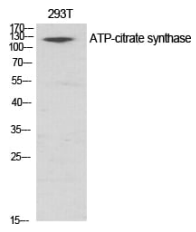
### Images



Western blot analysis of lysates from COS7 cells, treated with Calyculin 50nM 30', using ATP-Citrate Lyase Antibody. The lane on the right is blocked with the synthesized peptide.



Western Blot analysis of COS7 cells using ATP-citrate synthase Polyclonal Antibody diluted at 1:1000



Western Blot analysis of various cells using ATP-citrate synthase Polyclonal Antibody diluted at 1:1000

### Storage

-20°C for one year

501 Changsheng S Rd, Nanhu Dist, Jiaxing, Zhejiang, China

Tel: 86 21 31007137 | E-mail: [save@bt-laboratory.com](mailto:save@bt-laboratory.com) | [www.bt-laboratory.com](http://www.bt-laboratory.com)