

## Atrophin-1 Polyclonal Antibody

### Description

<b>Product type</b>	Primary Antibody
<b>Code</b>	BT-AP00757
<b>Host</b>	Rabbit
<b>Isotype</b>	IgG
<b>Size</b>	20ul, 50ul, 100ul
<b>Immunogen</b>	The antiserum was produced against synthesized peptide derived from human ATN1. AA range:81-130
<b>Mol wt</b>	124774
<b>Species reactivity</b>	Human, Mouse, Rat
<b>Clonality</b>	Polyclonal
<b>Recommended application</b>	WB, ELISA
<b>Concentration</b>	1 mg/ml
<b>Full name</b>	Atrophin-1 Antibody
<b>Synonyms</b>	ATN1; D12S755E; DRPLA; Atrophin-1; Dentatorubral-pallidolusian atrophy protein

This product is for research use only, not for use in human, therapeutic or diagnostic procedure.

### Background

Dentatorubral pallidolusian atrophy (DRPLA) is a rare neurodegenerative disorder characterized by cerebellar ataxia, myoclonic epilepsy, choreoathetosis, and dementia. The disorder is related to the expansion from 7-35 copies to 49-93 copies of a trinucleotide repeat (CAG/CAA) within this gene. The encoded protein includes a serine repeat and a region of alternating acidic and basic amino acids, as well as the variable glutamine repeat. Alternative splicing results in two transcripts variants that encode the same protein.

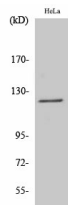
### Recommended Dilution

WB: 1: 500 - 1: 2000

ELISA: 1: 5000

Not yet tested in other applications.

### Images



Western Blot analysis of various cells using Atrophin-1 Polyclonal Antibody

### Storage

-20°C for one year