

AZI1 Polyclonal Antibody

Description

Product type	Primary Antibody
Code	BT-AP00785
Host	Rabbit
Isotype	IgG
Size	20ul, 50ul, 100ul
Immunogen	The antiserum was produced against synthesized peptide derived from human AZI1. AA range:311-360
Mol wt	122061
Species reactivity	Human
Clonality	Polyclonal
Recommended application	WB, IHC-p, ELISA
Concentration	1 mg/ml
Full name	AZI1 Antibody
Synonyms	AZI1; CEP131; KIAA1118; 5-azacytidine-induced protein 1; Centrosomal protein of 131 kDa; Cep131; Pre-acrosome localization protein 1

This product is for research use only, not for use in human, therapeutic or diagnostic procedure.

Background

AZI1, also known as 5-azacytidine-induced protein 1, is a 1,083 amino acid protein that may play a role in spermatogenesis. AZI1 is most highly expressed in spinal cord, followed by testis, ovary, amygdala, cerebellum and thalamus. Low expression is present in other adult and fetal tissues and specific adult brain regions. AZI1 gene transcription begins in pachytene spermatocytes and expression of the gene is induced in cultivated fibroblasts on treatment with 5-azacytidine, which is known to lead to the demethylation of genomic DNA. The AZI1 gene is conserved in dog, cow, mouse, rat, chicken, and zebrafish, and exists as two alternatively spliced isoforms. AZI1 contains one IQ domain, and the gene that encodes it maps to human chromosome 17q25.3. Chromosome 17 makes up over 2.5% of the human genome with about 81 million bases encoding over 1,200 genes. Alexander disease, Birt-Hogg-Dube syndrome and Canavan disease are also associated with chromosome 17.

Recommended Dilution

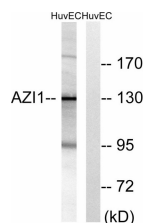
WB: 1: 500 - 1: 2000

IHC: 1: 100 - 1: 300

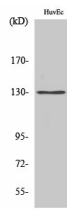
ELISA: 1: 40000

Not yet tested in other applications.

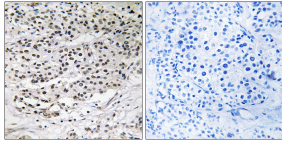
Images



Western blot analysis of lysates from HUVEC cells, using AZI1 Antibody. The lane on the right is blocked with the synthesized peptide.



Western Blot analysis of various cells using AZI1 Polyclonal Antibody



Immunohistochemistry analysis of paraffin-embedded human breast carcinoma tissue, using AZI1 Antibody. The picture on the right is blocked with the synthesized peptide.

Storage

-20°C for one year

501 Changsheng S Rd, Nanhu Dist, Jiaxing, Zhejiang, China

Tel: 86 21 31007137 | E-mail: save@bt-laboratory.com | www.bt-laboratory.com