

BAF170 Polyclonal Antibody

Description

Product type	Primary Antibody
Code	BT-AP00813
Host	Rabbit
Isotype	IgG
Size	20ul, 50ul, 100ul
Immunogen	The antiserum was produced against synthesized peptide derived from human SMRC2. AA range:361-410
Mol wt	132879
Species reactivity	Human, Mouse
Clonality	Polyclonal
Recommended application	WB, IF, ELISA
Concentration	1 mg/ml
Full name	BAF170 Antibody
Synonyms	SMARCC2; BAF170; SWI/SNF complex subunit SMARCC2; BRG1-associated factor 170; BAF170; SWI/SNF complex 170 kDa subunit; SWI/SNF-related matrix-associated actin-dependent regulator of chromatin subfamil

This product is for research use only, not for use in human, therapeutic or diagnostic procedure.

Background

The protein encoded by SMARCC2 is a member of the SWI/SNF family of proteins, whose members display helicase and ATPase activities and which are thought to regulate transcription of certain genes by altering the chromatin structure around those genes. The encoded protein (SWI/SNF related, matrix associated, actin dependent regulator of chromatin subfamily c member 2) is part of the large ATP-dependent chromatin remodeling complex SNF/SWI and contains a predicted leucine zipper motif typical of many transcription factors. Alternatively spliced transcript variants encoding different isoforms have been found for SMARCC2.

Recommended Dilution

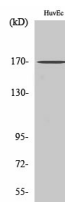
WB: 1: 500 - 1: 2000

IF: 1: 200 - 1: 1000

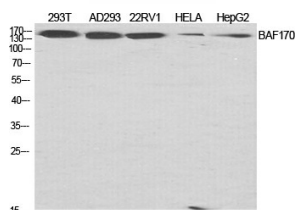
ELISA: 1: 10000

Not yet tested in other applications.

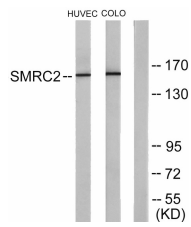
Images



Western Blot analysis of COLO205 cells using BAF170 Polyclonal Antibody diluted at 1:2000 cells nucleus.



Western Blot analysis of various cells using BAF170 Polyclonal Antibody diluted at 1:2000 cells nucleus.



Western blot analysis of lysates from HUVEC and COLO205 cells, using SMRC2 Antibody. The lane on the right is blocked with the synthesized peptide.

Storage

-20°C for one year

501 Changsheng S Rd, Nanhu Dist, Jiaxing, Zhejiang, China

Tel: 86 21 31007137 | E-mail: save@bt-laboratory.com | www.bt-laboratory.com