

BAGE3 Polyclonal Antibody

Description

Product type	Primary Antibody
Code	BT-AP00823
Host	Rabbit
Isotype	IgG
Size	20ul, 50ul, 100ul
Immunogen	The antiserum was produced against synthesized peptide derived from human BAGE3. AA range:41-90
Mol wt	12112
Species reactivity	Human
Clonality	Polyclonal
Recommended application	IHC-p, ELISA
Concentration	1 mg/ml
Full name	BAGE3 Antibody
Synonyms	BAGE3; B melanoma antigen 3; Cancer/testis antigen 2.3; CT2.3

This product is for research use only, not for use in human, therapeutic or diagnostic procedure.

Background

BAGE3, also named as CT2.2, belongs to the BAGE family. BAGE3 is a candidate gene encoding tumor antigens. It is cancer/testis antigen 2. The antibody can recognize BAGE2 and BAGE3.

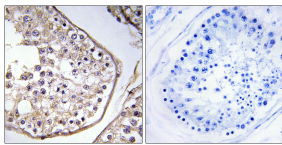
Recommended Dilution

IHC: 1: 100 - 1: 300

ELISA: 1: 20000

Not yet tested in other applications.

Images



Immunohistochemistry analysis of paraffin-embedded human testis, using BAGE3 Antibody. The picture on the right is blocked with the synthesized peptide.

Storage

-20°C for one year

501 Changsheng S Rd, Nanhu Dist, Jiaxing, Zhejiang, China

Tel: 86 21 31007137 | E-mail: save@bt-laboratory.com | www.bt-laboratory.com