

BAGE4 Polyclonal Antibody

Description

Product type	Primary Antibody
Code	BT-AP00824
Host	Rabbit
Isotype	IgG
Size	20ul, 50ul, 100ul
Immunogen	The antiserum was produced against synthesized peptide derived from human BAGE4. AA range:9-58
Mol wt	4230
Species reactivity	Human
Clonality	Polyclonal
Recommended application	IHC-p, ELISA
Concentration	1 mg/ml
Full name	BAGE4 Antibody
Synonyms	BAGE4; MLL3P; B melanoma antigen 4; Cancer/testis antigen 2.4; CT2.4

This product is for research use only, not for use in human, therapeutic or diagnostic procedure.

Background

BAGE4, also named as MLL3P and CT2.2, belongs to the BAGE family. It is a candidate gene encoding tumor antigens. BAGE4 is Cancer/testis antigen 2. The antibody can recognize BAGE4, BAGE, BAGE3, BAGE5.

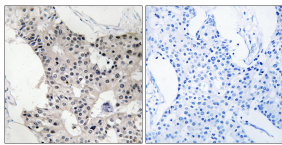
Recommended Dilution

IHC: 1: 100 - 1: 300

ELISA: 1: 10000

Not yet tested in other applications.

Images



Immunohistochemistry analysis of paraffin-embedded human breast carcinoma, using BAGE4 Antibody. The picture on the right is blocked with the synthesized peptide.

Storage

-20°C for one year

501 Changsheng S Rd, Nanhu Dist, Jiaxing, Zhejiang, China

Tel: 86 21 31007137 | E-mail: save@bt-laboratory.com | www.bt-laboratory.com