

BAGE5 Polyclonal Antibody

Description

Product type	Primary Antibody
Code	BT-AP00825
Host	Rabbit
Isotype	IgG
Size	20ul, 50ul, 100ul
Immunogen	Synthesized peptide derived from BAGE5 . at AA range: 30-110
Mol wt	51200
Species reactivity	Human, Mouse, Rat
Clonality	Polyclonal
Recommended application	WB, ELISA
Concentration	1 mg/ml
Full name	BAGE5 Antibody
Synonyms	BAG5; KIAA0873; BAG family molecular chaperone regulator 5; BAG-5; Bcl-2-associated athanogene 5

This product is for research use only, not for use in human, therapeutic or diagnostic procedure.

Background

BAG family molecular chaperone regulator 5 encoded by BAG5 is a member of the BAG1-related protein family. BAG1 is an anti-apoptotic protein that functions through interactions with a variety of cell apoptosis and growth related proteins including BCL-2, Raf-protein kinase, steroid hormone receptors, growth factor receptors and members of the heat shock protein 70 kDa family. This protein contains a BAG domain near the C-terminus, which could bind and inhibit the chaperone activity of Hsc70/Hsp70. Three transcript variants encoding two different isoforms have been found for this gene.

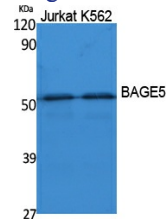
Recommended Dilution

WB: 1: 500 - 1: 2000

ELISA: 1: 5000

Not yet tested in other applications.

Images



Western Blot analysis of extracts from Jurkat, K562 cells, using BAGE5 Polyclonal Antibody. Secondary antibody was diluted at 1:20000

Storage

-20°C for one year