

## Bak Polyclonal Antibody

### Description

<b>Product type</b>	Primary Antibody
<b>Code</b>	BT-AP00831
<b>Host</b>	Rabbit
<b>Isotype</b>	IgG
<b>Size</b>	20ul, 50ul, 100ul
<b>Immunogen</b>	The antiserum was produced against synthesized peptide derived from human Bak. AA range:1-50
<b>Mol wt</b>	23409
<b>Species reactivity</b>	Human, Mouse
<b>Clonality</b>	Polyclonal
<b>Recommended application</b>	WB, IHC-p, IF, ELISA
<b>Concentration</b>	1 mg/ml
<b>Full name</b>	Bak Antibody
<b>Synonyms</b>	BAK1; BAK; BCL2L7; CDN1; Bcl-2 homologous antagonist/killer; Apoptosis regulator BAK; Bcl-2-like protein 7; Bcl2-L-7

This product is for research use only, not for use in human, therapeutic or diagnostic procedure.

### Background

The protein encoded by BAK1 belongs to the BCL2 protein family. BCL2 family members form oligomers or heterodimers and act as anti- or pro-apoptotic regulators that are involved in a wide variety of cellular activities. This protein (BCL2 antagonist/killer 1) localizes to mitochondria, and functions to induce apoptosis. It interacts with and accelerates the opening of the mitochondrial voltage-dependent anion channel, which leads to a loss in membrane potential and the release of cytochrome c. This protein also interacts with the tumor suppressor P53 after exposure to cell stress.

### Recommended Dilution

WB: 1: 500 - 1: 2000

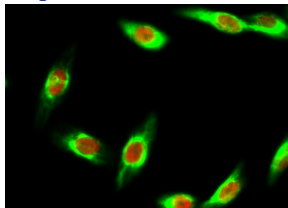
IHC: 1: 100 - 1: 300

IF: 1: 200 - 1: 1000

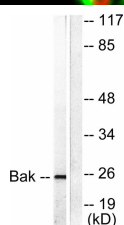
ELISA: 1: 10000

Not yet tested in other applications.

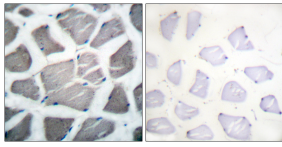
### Images



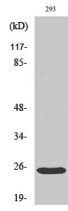
Immunofluorescence analysis of HeLa cell. 1, Bak Polyclonal Antibody (green) was diluted at 1:200 (4° overnight). (red) was diluted at 1:200 (4° overnight). 2, Goat Anti Rabbit Alexa Fluor 488 was diluted at 1:1000 (room temperature, 50min). Goat Anti Mouse Alexa Fluor 594 was diluted at 1:1000 (room temperature, 50min).



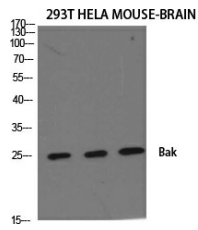
Western blot analysis of lysates from 293 cells, using Bak Antibody. The lane on the right is blocked with the synthesized peptide.



Immunohistochemistry analysis of paraffin-embedded human skeletal muscle tissue, using Bak Antibody. The picture on the right is blocked with the synthesized peptide.



Western Blot analysis of 293 cells using Bak Polyclonal Antibody diluted at 1:500



Western Blot analysis of various cells using Bak Polyclonal Antibody diluted at 1:500

### Storage

-20°C for one year

501 Changsheng S Rd, Nanhu Dist, Jiaxing, Zhejiang, China

Tel: 86 21 31007137 | E-mail: [save@bt-laboratory.com](mailto:save@bt-laboratory.com) | [www.bt-laboratory.com](http://www.bt-laboratory.com)