

## BAM32 Polyclonal Antibody

### Description

<b>Product type</b>	Primary Antibody
<b>Code</b>	BT-AP00832
<b>Host</b>	Rabbit
<b>Isotype</b>	IgG
<b>Size</b>	20ul, 50ul, 100ul
<b>Immunogen</b>	The antiserum was produced against synthesized peptide derived from human DAPP1. AA range:105-154
<b>Mol wt</b>	32194
<b>Species reactivity</b>	Human, Mouse
<b>Clonality</b>	Polyclonal
<b>Recommended application</b>	WB, IHC-p, ELISA
<b>Concentration</b>	1 mg/ml
<b>Full name</b>	BAM32 Antibody
<b>Synonyms</b>	DAPP1; BAM32; HSPC066; Dual adapter for phosphotyrosine and 3-phosphotyrosine and 3-phosphoinositide; hDAPP1; B lymphocyte adapter protein Bam32; B-cell adapter molecule of 32 kDa

**This product is for research use only, not for use in human, therapeutic or diagnostic procedure.**

### Background

B cell adapter molecule (BAM32) is also designated dual adapter for phosphotyrosine and 3-phosphotyrosine and 3-phosphoinositide (DAPP1) or B lymphocyte adapter protein. BAM32 is a B cell-associated adapter that is crucial for B cell antigen receptor signaling regulation. BAM32 interacts with PtdIns and PLC g2 and, upon B cell activation, the protein is phosphorylated on tyrosine residues. It is a mainly cytoplasmic protein that can translocate to the cell membrane after cell stimulation. BAM32, which contains one PH domain and one SH2 domain, is primarily expressed in placenta and lung tissues, but can also be detected in heart, liver, pancreas and brain.

### Recommended Dilution

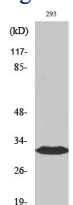
WB: 1: 500 - 1: 2000

IHC: 1: 100 - 1: 300

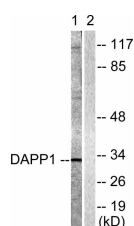
ELISA: 1: 10000

Not yet tested in other applications.

### Images



Western Blot analysis of various cells using BAM32 Polyclonal Antibody



Western blot analysis of lysates from 293 cells, treated with Insulin 0.01U/ml 2', using DAPP1 Antibody. The lane on the right is blocked with the synthesized peptide.

## Storage

-20°C for one year

501 Changsheng S Rd, Nanhu Dist, Jiaxing, Zhejiang, China

Tel: 86 21 31007137 | E-mail: [save@bt-laboratory.com](mailto:save@bt-laboratory.com) | [www.bt-laboratory.com](http://www.bt-laboratory.com)