

Bc10 Polyclonal Antibody

Description

Product type	Primary Antibody
Code	BT-AP00848
Host	Rabbit
Isotype	IgG
Size	20ul, 50ul, 100ul
Immunogen	The antiserum was produced against synthesized peptide derived from human BLCAP. AA range:38-87
Mol wt	9876
Species reactivity	Human, Mouse, Rat
Clonality	Polyclonal
Recommended application	IF, ELISA
Concentration	1 mg/ml
Full name	Bc10 Antibody
Synonyms	BLCAP; BC10; Bladder cancer-associated protein; Bladder cancer 10 kDa protein; Bc10

This product is for research use only, not for use in human, therapeutic or diagnostic procedure.

Background

BLCAP encodes a protein that reduces cell growth by stimulating apoptosis. Alternative splicing and the use of alternative promoters result in multiple transcript variants encoding the same protein. BLCAP is imprinted in brain where different transcript variants are expressed from each parental allele. Transcript variants initiating from the upstream promoter are expressed preferentially from the maternal allele, while transcript variants initiating downstream of the interspersed NNAT gene (GeneID: 4826) are expressed from the paternal allele. Transcripts at this locus may also undergo A to I editing, resulting in amino acid changes at three positions in the N-terminus of the protein.

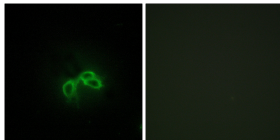
Recommended Dilution

IF: 1: 200 - 1: 1000

ELISA: 1: 40000

Not yet tested in other applications.

Images



Immunofluorescence analysis of NIH/3T3 cells, using BLCAP Antibody. The picture on the right is blocked with the synthesized peptide.

Storage

-20°C for one year