

BCA3 Polyclonal Antibody

Description

Product type	Primary Antibody
Code	BT-AP00850
Host	Rabbit
Isotype	IgG
Size	20ul, 50ul, 100ul
Immunogen	The antiserum was produced against synthesized peptide derived from human BCA3. AA range:111-160
Mol wt	23114
Species reactivity	Human
Clonality	Polyclonal
Recommended application	WB, IHC-p, ELISA
Concentration	1 mg/ml
Full name	BCA3 Antibody
Synonyms	AKIP1; BCA3; C11orf17; A-kinase-interacting protein 1; Breast cancer-associated gene 3 protein; PKA-interacting protein; Proline-rich protein BCA3

This product is for research use only, not for use in human, therapeutic or diagnostic procedure.

Background

AKIP1 encodes a nuclear protein (A-kinase interacting protein 1) that interacts with protein kinase A catalytic subunit, and regulates the effect of the cAMP-dependent protein kinase signaling pathway on the NF-kappa-B activation cascade. Alternatively spliced transcript variants have been described for AKIP1.

Recommended Dilution

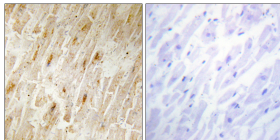
WB: 1: 500 - 1: 2000

IHC: 1: 100 - 1: 300

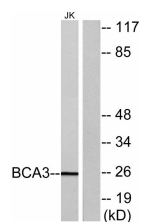
ELISA: 1: 20000

Not yet tested in other applications.

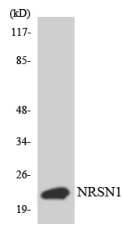
Images



Immunohistochemistry analysis of paraffin-embedded human heart tissue, using BCA3 Antibody. The picture on the right is blocked with the synthesized peptide.



Western blot analysis of lysates from Jurkat cells, using BCA3 Antibody. The lane on the right is blocked with the synthesized peptide.



Western blot analysis of the lysates from HepG2 cells using BCA3 antibody.



Western Blot analysis of various cells using BCA3 Polyclonal Antibody cells nucleus.

Storage

-20°C for one year

501 Changsheng S Rd, Nanhu Dist, Jiaxing, Zhejiang, China

Tel: 86 21 31007137 | E-mail: save@bt-laboratory.com | www.bt-laboratory.com