

BCAS2 Polyclonal Antibody

Description

Product type	Primary Antibody
Code	BT-AP00852
Host	Rabbit
Isotype	IgG
Size	20ul, 50ul, 100ul
Immunogen	The antiserum was produced against synthesized peptide derived from human BCAS2. AA range:176-225
Mol wt	26131
Species reactivity	Human, Mouse, Rat, Monkey
Clonality	Polyclonal
Recommended application	WB, ELISA
Concentration	1 mg/ml
Full name	BCAS2 Antibody
Synonyms	BCAS2; DAM1; Pre-mRNA-splicing factor SPF27; Breast carcinoma-amplified sequence 2; DNA amplified in mammary carcinoma 1 protein; Spliceosome-associated protein SPF 27

This product is for research use only, not for use in human, therapeutic or diagnostic procedure.

Background

BCAS2 was identified through differential display analysis as an mRNA species that was overexpressed in MCF7 and BT-20 breast cancer cell lines. The chromosomal region containing this gene, 1p13.3021, is amplified in these cells lines. BCAS2 is a transcriptional cofactor that enhances estrogen receptor-mediated gene expression, and directly interacts with the tumor suppressor p53 to reduce p53 transcriptional activity by reducing p53 protein level in the absence of DNA damage. Deprivation of BCAS2 through RNA inhibition induces apoptosis in p53-wild type cells, but causes G2-M arrest in p53-null or -mutant cells; this effect was reversed with the expression of ectopic BCAS2. BCAS2 may thus be potentially useful as a therapeutic target in the treatment of cancer.

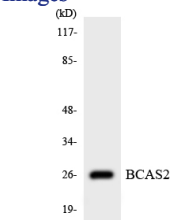
Recommended Dilution

WB: 1: 500 - 1: 2000

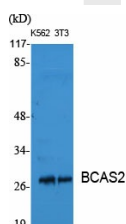
ELISA: 1: 5000

Not yet tested in other applications.

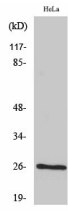
Images



Western blot analysis of the lysates from HUVEC cells using BCAS2 antibody.



Western Blot analysis of various cells using BCAS2 Polyclonal Antibody diluted at 1:1000 cells nucleus.



Western Blot analysis of COS7 cells using BCAS2 Polyclonal Antibody diluted at 1:1000 cells nucleus.

Storage

-20°C for one year

501 Changsheng S Rd, Nanhu Dist, Jiaxing, Zhejiang, China

Tel: 86 21 31007137 | E-mail: save@bt-laboratory.com | www.bt-laboratory.com