

BCAS3 Polyclonal Antibody

Description

Product type	Primary Antibody
Code	BT-AP00853
Host	Rabbit
Isotype	IgG
Size	20ul, 50ul, 100ul
Immunogen	Synthesized peptide derived from BCAS3 . at AA range: 660-740
Mol wt	101181
Species reactivity	Human, Mouse
Clonality	Polyclonal
Recommended application	WB, ELISA
Concentration	1 mg/ml
Full name	BCAS3 Antibody
Synonyms	BCAS3; Breast carcinoma-amplified sequence 3; GAOB1

This product is for research use only, not for use in human, therapeutic or diagnostic procedure.

Background

Rudhira/BCAS3 (Breast Cancer Amplified Sequence 3) is a conserved protein expressed in the embryonic vasculature and malignant tumors. Rudhira is a predicted WD40 domain protein. During mouse development Rudhira is expressed in erythropoietic and angiogenic precursors but not in their differentiated progeny. This transient expression of Rudhira is also seen in normal adult angiogenesis. BCAS3, the human ortholog of Rudhira is 98% identical and the gene maps to a breakpoint of hematological neoplasms on chromosome 17q23. BCAS3 is also expressed in vascular development in embryoid bodies in vitro and was originally identified as a gene over-expressed in breast cancers. It is reported to be a target of metastasis associated protein-1 (MTA-1). Further BCAS3 expression is also upregulated in grade III and IV glioblastomas where it is misexpressed in the tumor cells.

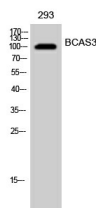
Recommended Dilution

WB: 1: 500 - 1: 2000

ELISA: 1: 5000

Not yet tested in other applications.

Images



Western Blot analysis of 293 cells using BCAS3 Polyclonal Antibody cells nucleus.

Storage

-20°C for one year