

Bcl-2 Polyclonal Antibody

Description

Product type	Primary Antibody
Code	BT-AP00857
Host	Rabbit
Isotype	IgG
Size	20ul, 50ul, 100ul
Immunogen	The antiserum was produced against synthesized peptide derived from human BCL-2. AA range:41-90
Mol wt	26266
Species reactivity	Human, Monkey
Clonality	Polyclonal
Recommended application	WB, IHC-p, ELISA
Concentration	1 mg/ml
Full name	Bcl-2 Antibody
Synonyms	BCL2; Apoptosis regulator Bcl-2

This product is for research use only, not for use in human, therapeutic or diagnostic procedure.

Background

BCL2 encodes an integral outer mitochondrial membrane protein (BCL2, apoptosis regulator) that blocks the apoptotic death of some cells such as lymphocytes. Constitutive expression of BCL2, such as in the case of translocation of BCL2 to Ig heavy chain locus, is thought to be the cause of follicular lymphoma. Alternative splicing results in multiple transcript variants.

Recommended Dilution

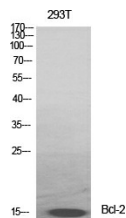
WB: 1: 500 - 1: 2000

IHC: 1: 100 - 1: 300

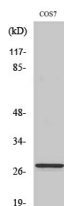
ELISA: 1: 10000

Not yet tested in other applications.

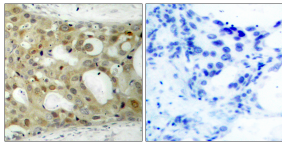
Images



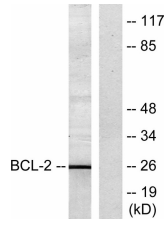
Western Blot analysis of various cells using Bcl-2 Polyclonal Antibody diluted at 1:1000



Western Blot analysis of COS7 cells using Bcl-2 Polyclonal Antibody diluted at 1:1000



Immunohistochemistry analysis of paraffin-embedded human breast carcinoma tissue, using BCL-2 Antibody. The picture on the right is blocked with the synthesized peptide.



Western blot analysis of lysates from COS7 cells, treated with paclitaxel 1uM 24h, using BCL-2 Antibody. The lane on the right is blocked with the synthesized peptide.

Storage

-20°C for one year

501 Changsheng S Rd, Nanhu Dist, Jiaxing, Zhejiang, China

Tel: 86 21 31007137 | E-mail: save@bt-laboratory.com | www.bt-laboratory.com