

## Bcl-2 Polyclonal Antibody

### Description

<b>Product type</b>	Primary Antibody
<b>Code</b>	BT-AP00858
<b>Host</b>	Rabbit
<b>Isotype</b>	IgG
<b>Size</b>	20ul, 50ul, 100ul
<b>Immunogen</b>	The antiserum was produced against synthesized peptide derived from human BCL-2. AA range:46-95
<b>Mol wt</b>	26266
<b>Species reactivity</b>	Human, Mouse, Rat
<b>Clonality</b>	Polyclonal
<b>Recommended application</b>	WB, IHC-p, IF, ELISA
<b>Concentration</b>	1 mg/ml
<b>Full name</b>	Bcl-2 Antibody
<b>Synonyms</b>	BCL2; Apoptosis regulator Bcl-2

This product is for research use only, not for use in human, therapeutic or diagnostic procedure.

### Background

BCL2 (BCL2, apoptosis regulator) encodes an integral outer mitochondrial membrane protein that blocks the apoptotic death of some cells such as lymphocytes. Constitutive expression of BCL2, such as in the case of translocation of BCL2 to Ig heavy chain locus, is thought to be the cause of follicular lymphoma. Alternative splicing results in multiple transcript variants.

### Recommended Dilution

WB: 1: 500 - 1: 2000

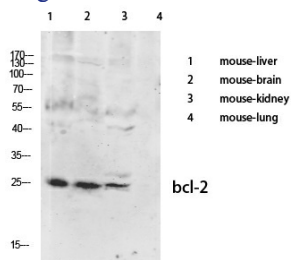
IHC: 1: 100 - 1: 300

IF: 1: 200 - 1: 1000

ELISA: 1: 10000

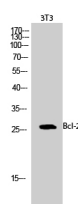
Not yet tested in other applications.

### Images

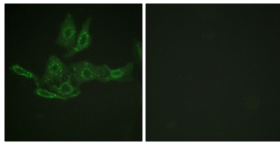


Western Blot analysis of various cells using primary antibody diluted at 1:1000(4°C overnight).

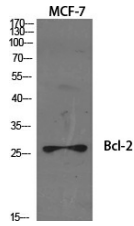
Secondary antibody:Goat Anti-rabbit IgG IRDye 800( diluted at 1:5000, 25°C, 1 hour).



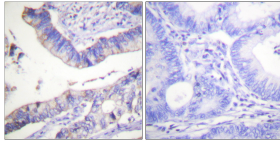
Western Blot analysis of 3T3 cells using Bcl-2 Polyclonal Antibody diluted at 1:1000



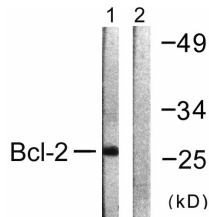
Immunofluorescence analysis of HepG2 cells, using BCL-2 Antibody. The picture on the right is blocked with the synthesized peptide.



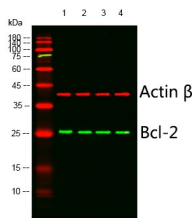
Western Blot analysis of various cells using Bcl-2 Polyclonal Antibody diluted at 1:1000



Immunohistochemistry analysis of paraffin-embedded human colon carcinoma tissue, using BCL-2 Antibody. The picture on the right is blocked with the synthesized peptide.



Western blot analysis of lysates from K562 cells, using BCL-2 Antibody. The lane on the right is blocked with the synthesized peptide.



Western blot analysis of lysates from 1)mouse-liver, 2)mouse-brain, 3)mouse-lung, 4)mcf-7 cells, (Green) primary antibody was diluted at 1:1000, 4° over night, Dylight 800 secondary antibody(Immunoway:RS23920)was diluted at 1:10000, 37° 1hour. (Red) Actin β Monoclonal Antibody(5B7) (Immunoway:YM3028) antibody was diluted at 1:5000 as loading control, 4° over night,Dylight 680 secondary antibody(Immunoway:RS23710)was diluted at 1:10000, 37° 1hour.

### Storage

-20°C for one year

501 Changsheng S Rd, Nanhu Dist, Jiaxing, Zhejiang, China

Tel: 86 21 31007137 | E-mail: [save@bt-laboratory.com](mailto:save@bt-laboratory.com) | [www.bt-laboratory.com](http://www.bt-laboratory.com)