

BCL2L12 Polyclonal Antibody

Description

Product type	Primary Antibody
Code	BT-AP00861
Host	Rabbit
Isotype	IgG
Size	20ul, 50ul, 100ul
Immunogen	Synthesized peptide derived from BCL2L12 . at AA range: 60-140
Mol wt	36821
Species reactivity	Human, Mouse
Clonality	Polyclonal
Recommended application	WB, ELISA
Concentration	1 mg/ml
Full name	BCL2L12 Antibody
Synonyms	BCL2L12; BPR; Bcl-2-like protein 12; Bcl2-L-12; Bcl-2-related proline-rich protein

This product is for research use only, not for use in human, therapeutic or diagnostic procedure.

Background

BCL2L12 (BCL2 like 12) encodes a member of a family of proteins containing a Bcl-2 homology domain 2 (BH2). The encoded protein is an anti-apoptotic factor that acts as an inhibitor of caspases 3 and 7 in the cytoplasm. In the nucleus, it binds to the p53 tumor suppressor protein, preventing its association with target genes. Overexpression of BCL2L12 has been detected in a number of different cancers. There is a pseudogene for BCL2L12 on chromosome 3. Alternative splicing results in multiple transcript variants.

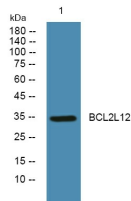
Recommended Dilution

WB: 1: 500 - 1: 2000

ELISA: 1: 5000

Not yet tested in other applications.

Images



Western blot analysis of lysates from Jarkat cells, primary antibody was diluted at 1:1000, 4^oover night

Storage

-20°C for one year