

His-tag Polyclonal Antibody

Description

Product type	Primary Antibody
Code	BT-AP00862
Host	Rabbit
Isotype	IgG
Size	100ul, 50uL, 20ul
Immunogen	6X His synthetic peptide conjugated to KLH.
Mol wt	N/A
Species reactivity	Species independent
Clonality	Polyclonal
Recommended application	WB, ELISA
Concentration	1 mg/ml
Full name	His Tag
Synonyms	His Tag; 6 His epitope tag; Hexa His tag; HHHHHH epitope tag; HHHHHH tag; His tag

This product is for research use only, not for use in human, therapeutic or diagnostic procedure.

Background

The his-tag is a series of six to nine histidine residues generally fused to either the carboxy or amino terminus of a recombinant protein. The small size of the his-tag, compared with other common epitope tags, makes it less likely to obstruct the target protein's structure or function and more suitable to use under denaturing conditions. The string of histidine residues binds to several types of immobilized metal ions, including nickel, cobalt and copper. The binding to metal ions under specific buffer conditions, allows for the simple purification and detection of his-tagged proteins.

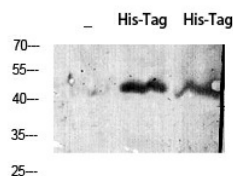
Recommended Dilution

WB: 1: 1000 - 1: 3000

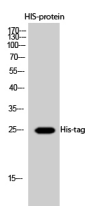
ELISA: 1: 20000

Not yet tested in other applications.

Images



Western Blot analysis using His-tag Polyclonal Antibody against HEK293 cells transfected with vector overexpressing His tag (1) and untransfected (2). Antibody was diluted at 1:2000. Secondary antibody was diluted at 1:20000



Western Blot analysis of HIS-protein cells using His-tag Polyclonal Antibody diluted at 1:2000. Secondary antibody was diluted at 1:20000

Storage

-20°C for 1 year

501 Changsheng S Rd, Nanhu Dist, Jiaxing, Zhejiang, China

Tel: 86 21 31007137 | E-mail: save@bt-laboratory.com | www.bt-laboratory.com