

Bcl-6 Polyclonal Antibody

Description

Product type	Primary Antibody
Code	BT-AP00867
Host	Rabbit
Isotype	IgG
Size	20ul, 50ul, 100ul
Immunogen	The antiserum was produced against synthesized peptide derived from human Bcl-6. AA range:299-348
Mol wt	78846
Species reactivity	Human, Mouse, Rat
Clonality	Polyclonal
Recommended application	WB, IHC-p, ELISA
Concentration	1 mg/ml
Full name	Bcl-6 Antibody
Synonyms	BCL6; BCL5; LAZ3; ZBTB27; ZNF51; B-cell lymphoma 6 protein; BCL-6; B-cell lymphoma 5 protein; BCL-5; Protein LAZ-3; Zinc finger and BTB domain-containing protein 27; Zinc finger protein 51

This product is for research use only, not for use in human, therapeutic or diagnostic procedure.

Background

The protein encoded by BCL6 (B-cell CLL/lymphoma 6) is a zinc finger transcription factor and contains an N-terminal POZ domain. This protein acts as a sequence-specific repressor of transcription, and has been shown to modulate the transcription of STAT-dependent IL-4 responses of B cells. This protein can interact with a variety of POZ-containing proteins that function as transcription corepressors. BCL6 is found to be frequently translocated and hypermutated in diffuse large-cell lymphoma (DLCL), and may be involved in the pathogenesis of DLCL. Alternatively spliced transcript variants encoding different protein isoforms have been found for BCL6.

Recommended Dilution

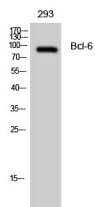
WB: 1: 500 - 1: 2000

IHC: 1: 100 - 1: 300

ELISA: 1: 40000

Not yet tested in other applications.

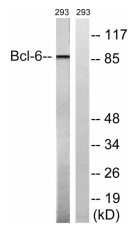
Images



Western Blot analysis of 293 cells using Bcl-6 Polyclonal Antibody diluted at 1:2000 cells nucleus.



Western Blot analysis of mouse-heart NIH-3T3 cells using Bcl-6 Polyclonal Antibody diluted at 1:2000 cells nucleus.



Western blot analysis of lysates from 293 cells, using Bcl-6 Antibody. The lane on the right is blocked with the synthesized peptide.

Storage

-20°C for one year

501 Changsheng S Rd, Nanhu Dist, Jiaxing, Zhejiang, China

Tel: 86 21 31007137 | E-mail: save@bt-laboratory.com | www.bt-laboratory.com