

Bcl-7a Polyclonal Antibody

Description

Product type	Primary Antibody
Code	BT-AP00869
Host	Rabbit
Isotype	IgG
Size	20ul, 50ul, 100ul
Immunogen	The antiserum was produced against synthesized peptide derived from human BCL7A. AA range:21-70
Mol wt	22810
Species reactivity	Human, Mouse
Clonality	Polyclonal
Recommended application	WB, ELISA
Concentration	1 mg/ml
Full name	Bcl-7a Antibody
Synonyms	BCL7A; B-cell CLL/lymphoma 7 protein family member A

This product is for research use only, not for use in human, therapeutic or diagnostic procedure.

Background

BCL7A (BCL tumor suppressor 7A) is directly involved, with Myc and IgH, in a three-way gene translocation in a Burkitt lymphoma cell line. As a result of the gene translocation, the N-terminal region of the gene product is disrupted, which is thought to be related to the pathogenesis of a subset of high-grade B cell non-Hodgkin lymphoma. The N-terminal segment involved in the translocation includes the region that shares a strong sequence similarity with those of BCL7B and BCL7C. Two transcript variants encoding different isoforms have been found for BCL7A.

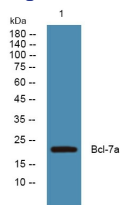
Recommended Dilution

WB: 1: 500 - 1: 2000

ELISA: 1: 5000

Not yet tested in other applications.

Images



Western blot analysis of lysates from SW480 cells, primary antibody was diluted at 1:1000, 4° over night

Storage

-20°C for one year