

BEGAIN Polyclonal Antibody

Description

Product type	Primary Antibody
Code	BT-AP00886
Host	Rabbit
Isotype	IgG
Size	20ul, 50ul, 100ul
Immunogen	The antiserum was produced against synthesized peptide derived from human BEGIN. AA range:511-560
Mol wt	64803
Species reactivity	Human, Mouse, Rat
Clonality	Polyclonal
Recommended application	WB, IHC-p, IF, ELISA
Concentration	1 mg/ml
Full name	BEGAIN Antibody
Synonyms	BEGAIN; KIAA1446; Brain-enriched guanylate kinase-associated protein

This product is for research use only, not for use in human, therapeutic or diagnostic procedure.

Background

BEGAIN (Brain Enriched Guanylate Kinase Associated) is a Protein Coding gene. GO annotations related to this gene include kinase activity. An important paralog of this gene is TJAP1.

Recommended Dilution

WB: 1: 500 - 1: 2000

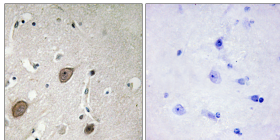
IHC: 1: 100 - 1: 300

IF: 1: 200 - 1: 1000

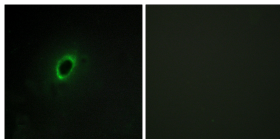
ELISA: 1: 5000

Not yet tested in other applications.

Images



Immunohistochemistry analysis of paraffin-embedded human brain tissue, using BEGIN Antibody. The picture on the right is blocked with the synthesized peptide.



Immunofluorescence analysis of HeLa cells, using BEGIN Antibody. The picture on the right is blocked with the synthesized peptide.

Storage

-20°C for one year