

BET3 Polyclonal Antibody

Description

Product type	Primary Antibody
Code	BT-AP00890
Host	Rabbit
Isotype	IgG
Size	20ul, 50ul, 100ul
Immunogen	The antiserum was produced against synthesized peptide derived from human TRAPPC3. AA range:131-180
Mol wt	20274
Species reactivity	Human, Mouse, Rat
Clonality	Polyclonal
Recommended application	WB, IHC-p, ELISA
Concentration	1 mg/ml
Full name	BET3 Antibody
Synonyms	TRAPPC3; BET3; CDABP0066; Trafficking protein particle complex subunit 3; BET3 homolog

This product is for research use only, not for use in human, therapeutic or diagnostic procedure.

Background

TRAPPC3 encodes a component of the trafficking protein particle complex, which tethers transport vesicles to the cis-Golgi membrane. The encoded protein (trafficking protein particle complex 3) participates in the regulation of transport from the endoplasmic reticulum to the Golgi apparatus. Alternative splicing results in multiple transcript variants.

Recommended Dilution

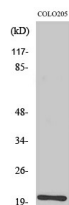
WB: 1: 500 - 1: 2000

IHC: 1: 100 - 1: 300

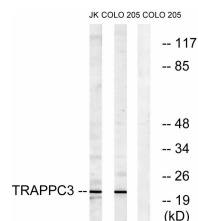
ELISA: 1: 5000

Not yet tested in other applications.

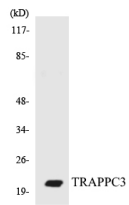
Images



Western Blot analysis of various cells using BET3 Polyclonal Antibody diluted at 1:500



Western blot analysis of lysates from COLO and Jurkat cells, using TRAPPC3 Antibody. The lane on the right is blocked with the synthesized peptide.



Western blot analysis of the lysates from COLO205 cells using TRAPPC3 antibody.

Storage

-20°C for one year

501 Changsheng S Rd, Nanhu Dist, Jiaxing, Zhejiang, China

Tel: 86 21 31007137 | E-mail: save@bt-laboratory.com | www.bt-laboratory.com