

BET5 Polyclonal Antibody

Description

Product type	Primary Antibody
Code	BT-AP00891
Host	Rabbit
Isotype	IgG
Size	20ul, 50ul, 100ul
Immunogen	The antiserum was produced against synthesized peptide derived from human TRAPPC1. AA range:10-59
Mol wt	16832
Species reactivity	Human, Mouse, Rat
Clonality	Polyclonal
Recommended application	IHC-p, ELISA
Concentration	1 mg/ml
Full name	BET5 Antibody
Synonyms	TRAPPC1; BET5; MUM2; Trafficking protein particle complex subunit 1; BET5 homolog; Multiple myeloma protein 2; MUM-2

This product is for research use only, not for use in human, therapeutic or diagnostic procedure.

Background

TRAPPC1 (trafficking protein particle complex 1) product plays a role in vesicular transport of proteins to the Golgi apparatus from the endoplasmic reticulum. The encoded protein is a component of the multisubunit transport protein particle (TRAPP) complex. Alternative splicing results in multiple transcript variants.

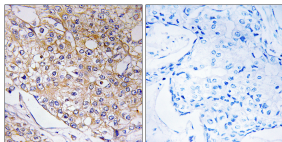
Recommended Dilution

IHC: 1: 100 - 1: 300

ELISA: 1: 5000

Not yet tested in other applications.

Images



Immunohistochemistry analysis of paraffin-embedded human breast carcinoma tissue, using TRAPPC1 Antibody. The picture on the right is blocked with the synthesized peptide.

Storage

-20°C for one year

501 Changsheng S Rd, Nanhu Dist, Jiaxing, Zhejiang, China

Tel: 86 21 31007137 | E-mail: save@bt-laboratory.com | www.bt-laboratory.com