

BIG2 Polyclonal Antibody

Description

Product type	Primary Antibody
Code	BT-AP00899
Host	Rabbit
Isotype	IgG
Size	20ul, 50ul, 100ul
Immunogen	The antiserum was produced against synthesized peptide derived from human ARFGEF2. AA range:1491-1540
Mol wt	202038
Species reactivity	Human, Mouse, Rat
Clonality	Polyclonal
Recommended application	WB, IHC-p, IF, ELISA
Concentration	1 mg/ml
Full name	BIG2 Antibody
Synonyms	ARFGEF2; ARFGEP2; BIG2; Brefeldin A-inhibited guanine nucleotide-exchange protein 2; Brefeldin A-inhibited GEP 2; ADP-ribosylation factor guanine nucleotide-exchange factor 2

This product is for research use only, not for use in human, therapeutic or diagnostic procedure.

Background

ADP-ribosylation factors (ARFs) play an important role in intracellular vesicular trafficking. The protein (ADP ribosylation factor guanine nucleotide exchange factor 2) encoded by ARFGEF2 is involved in the activation of ARFs by accelerating replacement of bound GDP with GTP and is involved in Golgi transport. It contains a Sec7 domain, which may be responsible for its guanine-nucleotide exchange activity and also brefeldin A inhibition.

Recommended Dilution

WB: 1: 500 - 1: 2000

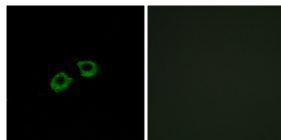
IHC: 1: 100 - 1: 300

IF: 1: 200 - 1: 1000

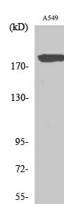
ELISA: 1: 20000

Not yet tested in other applications.

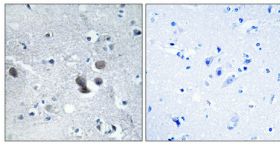
Images



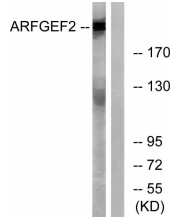
Immunofluorescence analysis of A549 cells, using ARFGEF2 Antibody. The picture on the right is blocked with the synthesized peptide.



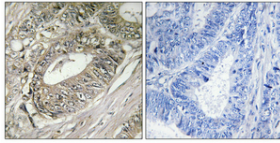
Western Blot analysis of various cells using BIG2 Polyclonal Antibody



Immunohistochemical analysis of paraffin-embedded Human brain. Antibody was diluted at 1:100(4° overnight). High-pressure and temperature Tris-EDTA,pH8.0 was used for antigen retrieval. Negative contrl (right) obtaned from antibody was pre-absorbed by immunogen peptide.



Western blot analysis of lysates from A549 cells, using ARFGEF2 Antibody. The lane on the right is blocked with the synthesized peptide.



Immunohistochemical analysis of paraffin-embedded Human colon cancer. Antibody was diluted at 1:100(4° overnight). High-pressure and temperature Tris-EDTA,pH8.0 was used for antigen retrieval. Negative contrl (right) obtaned from antibody was pre-absorbed by immunogen peptide.

Storage

-20°C for one year

501 Changsheng S Rd, Nanhu Dist, Jiaxing, Zhejiang, China

Tel: 86 21 31007137 | E-mail: save@bt-laboratory.com | www.bt-laboratory.com