

BinCARD Polyclonal Antibody

Description

Product type	Primary Antibody
Code	BT-AP00902
Host	Rabbit
Isotype	IgG
Size	20ul, 50ul, 100ul
Immunogen	The antiserum was produced against synthesized peptide derived from human C9orf89. AA range:21-70
Mol wt	25589
Species reactivity	Human, Mouse
Clonality	Polyclonal
Recommended application	IHC-p, ELISA
Concentration	1 mg/ml
Full name	BinCARD Antibody
Synonyms	C9orf89; Bcl10-interacting CARD protein; BinCARD

This product is for research use only, not for use in human, therapeutic or diagnostic procedure.

Background

BinCARD (Bcl10-interacting CARD protein) is a 228 amino acid protein that exists as two alternatively spiced isoforms. BinCARD localizes to nucleus and is expressed in ovary, testis, placenta, skeletal muscle, kidney, lung, heart, liver, thymus and brain. Containing a CARD domain, BinCARD plays a role in inhibiting the effects of Bcl10-induced activation of NFκB possibly by inhibiting the phosphorylation of Bcl10 in a CARD-dependent manner. The BinCARD gene maps to chromosome 9q22.1. Chromosome 9 consists of about 145 million bases and 4% of the human genome and encodes nearly 900 genes. Notably, chromosome 9 encompasses the largest interferon family gene cluster. Considered to play a role in gender determination, deletion of the distal portion of 9p can lead to development of male to female sex reversal, the phenotype of a female with a male X,Y genotype. Hereditary hemorrhagic telangiectasia, which is characterized by harmful vascular defects, is associated with the chromosome 9 gene encoding endoglin protein, ENG. Familial dysautonomia is also associated with chromosome 9 though through the gene IKAP.

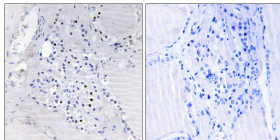
Recommended Dilution

IHC: 1: 100 - 1: 300

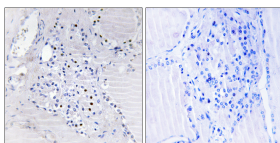
ELISA: 1: 40000

Not yet tested in other applications.

Images



Immunohistochemistry analysis of paraffin-embedded human thyroid gland tissue, using C9orf89 Antibody. The picture on the right is blocked with the synthesized peptide.



Immunohistochemistry analysis of paraffin-embedded human thyroid gland tissue, using C9orf89 Antibody. The picture on the right is blocked with the synthesized peptide.

Storage

-20°C for one year

501 Changsheng S Rd, Nanhu Dist, Jiaxing, Zhejiang, China

Tel: 86 21 31007137 | E-mail: save@bt-laboratory.com | www.bt-laboratory.com