

## Blk Polyclonal Antibody

### Description

Product type	Primary Antibody
Code	BT-AP00907
Host	Rabbit
Isotype	IgG
Size	20ul, 50ul, 100ul
Immunogen	The antiserum was produced against synthesized peptide derived from human BLK. AA range:456-505
Mol wt	57706
Species reactivity	Human, Mouse, Rat
Clonality	Polyclonal
Recommended application	WB, IHC-p, ELISA
Concentration	1 mg/ml
Full name	Blk Antibody
Synonyms	BLK; Tyrosine-protein kinase Blk; B lymphocyte kinase; p55-Blk

This product is for research use only, not for use in human, therapeutic or diagnostic procedure.

### Background

BLK encodes a nonreceptor tyrosine-kinase of the src family of proto-oncogenes that are typically involved in cell proliferation and differentiation. The protein (BLK proto-oncogene, Src family tyrosine kinase) has a role in B-cell receptor signaling and B-cell development. The protein also stimulates insulin synthesis and secretion in response to glucose and enhances the expression of several pancreatic beta-cell transcription factors.

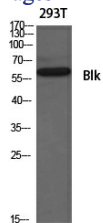
### Recommended Dilution

IHC: 1: 100 - 1: 300

ELISA: 1: 40000

Not yet tested in other applications.

### Images



Western Blot analysis of various cells using Blk Polyclonal Antibody diluted at 1:500

### Storage

-20°C for one year