

BMP-5 Polyclonal Antibody

Description

Product type	Primary Antibody
Code	BT-AP00927
Host	Rabbit
Isotype	IgG
Size	20ul, 50ul, 100ul
Immunogen	The antiserum was produced against synthesized peptide derived from human BMP-5. AA range:114-163
Mol wt	51737
Species reactivity	Human, Mouse
Clonality	Polyclonal
Recommended application	WB, IHC-p, ELISA
Concentration	1 mg/ml
Full name	BMP-5 Antibody
Synonyms	BMP5; Bone morphogenetic protein 5; BMP-5

This product is for research use only, not for use in human, therapeutic or diagnostic procedure.

Background

BMP5 encodes a secreted ligand of the TGF-beta (transforming growth factor-beta) superfamily of proteins. Ligands of this family bind various TGF-beta receptors leading to recruitment and activation of SMAD family transcription factors that regulate gene expression. The encoded preproprotein is proteolytically processed to generate each subunit of the disulfide-linked homodimer, which plays a role in bone and cartilage development. Polymorphisms in this gene may be associated with osteoarthritis in human patients. This gene is differentially regulated in multiple human cancers. BMP5 encodes distinct protein isoforms that may be similarly proteolytically processed.

Recommended Dilution

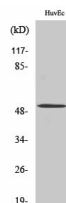
WB: 1: 500 - 1: 2000

IHC: 1: 100 - 1: 300

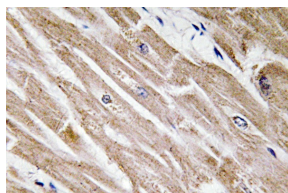
ELISA: 1: 40000

Not yet tested in other applications.

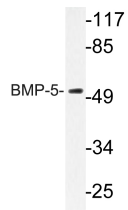
Images



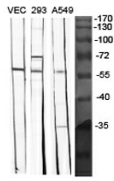
Western Blot analysis of HeLa cells using BMP-5 Polyclonal Antibody diluted at 1:1000



Immunohistochemistry analysis of BMP-5 antibody in paraffin-embedded human heart tissue.



Western blot analysis of lysate from HUVEC cells, using BMP-5 antibody.



Western Blot analysis of various cells using BMP-5 Polyclonal Antibody diluted at 1:1000

Storage

-20°C for one year

501 Changsheng S Rd, Nanhu Dist, Jiaxing, Zhejiang, China

Tel: 86 21 31007137 | E-mail: save@bt-laboratory.com | www.bt-laboratory.com