

BMP-8 Polyclonal Antibody

Description

Product type	Primary Antibody
Code	BT-AP00931
Host	Rabbit
Isotype	IgG
Size	20ul, 50ul, 100ul
Immunogen	The antiserum was produced against synthesized peptide derived from human BMP-8. AA range:41-90
Mol wt	44768
Species reactivity	Human
Clonality	Polyclonal
Recommended application	IHC-p, ELISA
Concentration	1 mg/ml
Full name	BMP-8 Antibody
Synonyms	BMP8B; BMP8; Bone morphogenetic protein 8B; BMP-8; BMP-8B; Osteogenic protein 2; OP-2; BMP8A; Bone morphogenetic protein 8A; BMP-8A

This product is for research use only, not for use in human, therapeutic or diagnostic procedure.

Background

BMP8B (bone morphogenetic protein 8b) encodes a secreted ligand of the TGF-beta (transforming growth factor-beta) superfamily of proteins. Ligands of this family bind various TGF-beta receptors leading to recruitment and activation of SMAD family transcription factors that regulate gene expression. The encoded preproprotein is proteolytically processed to generate each subunit of the disulfide-linked homodimer. The encoded protein stimulates thermogenesis in brown adipose tissue. Expression of BMP8B may be downregulated in pancreatic cancer. BMP8B may have arose from a gene duplication event and its gene duplicate is also present on chromosome 1.

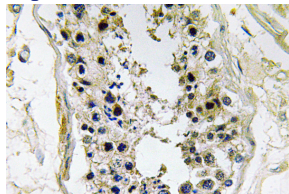
Recommended Dilution

IHC: 1: 100 - 1: 300

ELISA: 1: 40000

Not yet tested in other applications.

Images



Immunohistochemistry analysis of BMP-8 antibody in paraffin-embedded human testis tissue.

Storage

-20°C for one year