

Bmx Polyclonal Antibody

Description

Product type	Primary Antibody
Code	BT-AP00941
Host	Rabbit
Isotype	IgG
Size	20ul, 50ul, 100ul
Immunogen	The antiserum was produced against synthesized peptide derived from human ETK. AA range:532-581
Mol wt	78011
Species reactivity	Human, Mouse
Clonality	Polyclonal
Recommended application	WB, IHC-p, IF, ELISA
Concentration	1 mg/ml
Full name	Bmx Antibody
Synonyms	BMX; Cytoplasmic tyrosine-protein kinase BMX; Bone marrow tyrosine kinase gene in chromosome X protein; Epithelial and endothelial tyrosine kinase; ETK; NTK38

This product is for research use only, not for use in human, therapeutic or diagnostic procedure.

Background

BMX encodes a non-receptor tyrosine kinase belonging to the Tec kinase family. The protein (BMX non-receptor tyrosine kinase) contains a PH-like domain, which mediates membrane targeting by binding to phosphatidylinositol 3,4,5-triphosphate (PIP3), and a SH2 domain that binds to tyrosine-phosphorylated proteins and functions in signal transduction. The protein is implicated in several signal transduction pathways including the Stat pathway, and regulates differentiation and tumorigenicity of several types of cancer cells. Alternatively spliced transcript variants have been found for BMX.

Recommended Dilution

WB: 1: 500 - 1: 2000

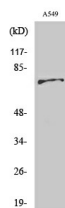
IHC: 1: 100 - 1: 300

IF: 1: 200 - 1: 1000

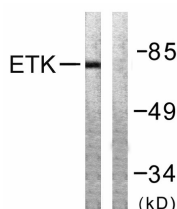
ELISA: 1: 10000

Not yet tested in other applications.

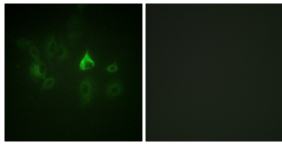
Images



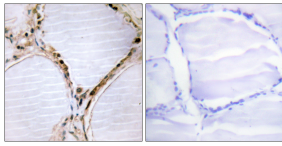
Western Blot analysis of various cells using Bmx Polyclonal Antibody diluted at 1:1000



Western blot analysis of lysates from A549 cells, using ETK Antibody. The lane on the right is blocked with the synthesized peptide.



Immunofluorescence analysis of A549 cells, using ETK Antibody. The picture on the right is blocked with the synthesized peptide.



Immunohistochemistry analysis of paraffin-embedded human thyroid gland tissue, using ETK Antibody. The picture on the right is blocked with the synthesized peptide.

Storage

-20°C for one year

501 Changsheng S Rd, Nanhu Dist, Jiaxing, Zhejiang, China

Tel: 86 21 31007137 | E-mail: save@bt-laboratory.com | www.bt-laboratory.com