

BRAF35 Polyclonal Antibody

Description

Product type	Primary Antibody
Code	BT-AP00964
Host	Rabbit
Isotype	IgG
Size	20ul, 50ul, 100ul
Immunogen	The antiserum was produced against synthesized peptide derived from human HMG20B. AA range:1-50
Mol wt	35813
Species reactivity	Human
Clonality	Polyclonal
Recommended application	WB, IHC-p, IF, ELISA
Concentration	1 mg/ml
Full name	BRAF35 Antibody
Synonyms	HMG20B; BRAF35; HMGX2; HMGXB2; SMARCE1R; SWI/SNF-related matrix-associated actin-dependent regulator of chromatin subfamily E member 1-related; SMARCE1-related protein; BRCA2-associated factor 35; HMG

This product is for research use only, not for use in human, therapeutic or diagnostic procedure.

Background

The breast cancer susceptibility gene (BRCA1) localizes to chromosome 17q. Mutations within this gene account for approximately 45% of families with high incidence of breast cancer and at least 80% of families with increased incidence of both early-onset breast cancer and ovarian cancer. A second breast cancer susceptibility gene, BRCA2, located on chromosome 13q12-13, also confers a high incidence of breast cancer, but unlike BRCA1, BRCA2 does not confer a substantially elevated risk of ovarian cancer. The BRCA2-Associated Factor 35 (BRAF35) protein forms a complex with BRCA2, which associates with condensed chromatin during histone H3 phosphorylation. BRAF35 expression levels are highest in proliferating tissues and parallel BRCA2 expression patterns. The structure of BRAF35 includes a kinesin-like coiled coil domain and a nonspecific DNA binding HMG domain. The chromatin localization of BRAF35 and antibody microinjection studies indicate a role for the BRAF35/BRCA2 complex in cell cycle regulation.

Recommended Dilution

WB: 1: 500 - 1: 2000

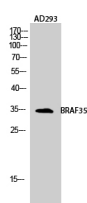
IHC: 1: 100 - 1: 300

IF: 1: 200 - 1: 1000

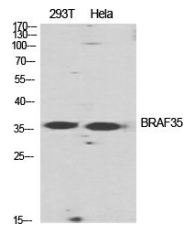
ELISA: 1: 20000

Not yet tested in other applications.

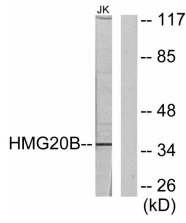
Images



Western Blot analysis of AD293 cells using BRAF35 Polyclonal Antibody diluted at 1:2000 cells nucleus.



Western Blot analysis of various cells using BRAF35 Polyclonal Antibody diluted at 1:2000 cells nucleus.



Western blot analysis of lysates from Jurkat cells, using HMG20B Antibody. The lane on the right is blocked with the synthesized peptide.

Storage

-20°C for one year

501 Changsheng S Rd, Nanhu Dist, Jiaxing, Zhejiang, China

Tel: 86 21 31007137 | E-mail: save@bt-laboratory.com | www.bt-laboratory.com