

## BRCA1 Polyclonal Antibody

### Description

<b>Product type</b>	Primary Antibody
<b>Code</b>	BT-AP00967
<b>Host</b>	Rabbit
<b>Isotype</b>	IgG
<b>Size</b>	20ul, 50ul, 100ul
<b>Immunogen</b>	The antiserum was produced against synthesized peptide derived from human BRCA1. AA range:1423-1472
<b>Mol wt</b>	207721
<b>Species reactivity</b>	Human
<b>Clonality</b>	Polyclonal
<b>Recommended application</b>	WB, ELISA
<b>Concentration</b>	1 mg/ml
<b>Full name</b>	BRCA1 Antibody
<b>Synonyms</b>	BRCA1; RNF53; Breast cancer type 1 susceptibility protein; RING finger protein 53

**This product is for research use only, not for use in human, therapeutic or diagnostic procedure.**

### Background

BRCA1 (BRCA1, DNA repair associated) encodes a nuclear phosphoprotein that plays a role in maintaining genomic stability, and it also acts as a tumor suppressor. The encoded protein combines with other tumor suppressors, DNA damage sensors, and signal transducers to form a large multi-subunit protein complex known as the BRCA1-associated genome surveillance complex (BASC). This gene product associates with RNA polymerase II, and through the C-terminal domain, also interacts with histone deacetylase complexes. This protein thus plays a role in transcription, DNA repair of double-stranded breaks, and recombination. Mutations in BRCA1 are responsible for approximately 40% of inherited breast cancers and more than 80% of inherited breast and ovarian cancers. Alternative splicing plays a role in modulating the subcellular localization and physiological function of this gene. Many alternatively spliced transcript variants, some of which are disease-associated mutations, have been described for BRCA1, but the full-length nature of only some of these variants has been described. A related pseudogene, which is also located on chromosome 17, has been identified.

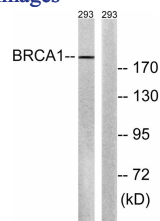
### Recommended Dilution

WB: 1: 500 - 1: 2000

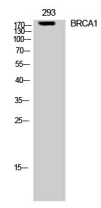
ELISA: 1: 5000

Not yet tested in other applications.

### Images



Western blot analysis of lysates from 293 cells treated with epo 20U/ml 15', using BRCA1 Antibody. The lane on the right is blocked with the synthesized peptide.



Western Blot analysis of 293 cells using BRCA1 Polyclonal Antibody

### Storage

-20°C for one year

501 Changsheng S Rd, Nanhu Dist, Jiaxing, Zhejiang, China

Tel: 86 21 31007137 | E-mail: [save@bt-laboratory.com](mailto:save@bt-laboratory.com) | [www.bt-laboratory.com](http://www.bt-laboratory.com)