

BRD3 Polyclonal Antibody

Description

Product type	Primary Antibody
Code	BT-AP00972
Host	Rabbit
Isotype	IgG
Size	20ul, 50ul, 100ul
Immunogen	The antiserum was produced against synthesized peptide derived from human BRD3. AA range:611-660
Mol wt	79542
Species reactivity	Human, Mouse
Clonality	Polyclonal
Recommended application	WB, IHC-p, IF, ELISA
Concentration	1 mg/ml
Full name	BRD3 Antibody
Synonyms	BRD3; KIAA0043; RING3L; Bromodomain-containing protein 3; RING3-like protein

This product is for research use only, not for use in human, therapeutic or diagnostic procedure.

Background

BRD3 was identified based on its homology to the gene encoding the RING3 protein, a serine/threonine kinase. BRD3 localizes to 9q34, a region which contains several major histocompatibility complex (MHC) genes. The function of the encoded protein (bromodomain containing 3) is not known.

Recommended Dilution

WB: 1: 500 - 1: 2000

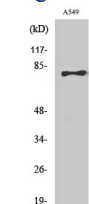
IHC: 1: 100 - 1: 300

IF: 1: 200 - 1: 1000

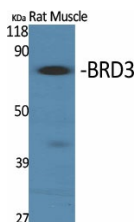
ELISA: 1: 20000

Not yet tested in other applications.

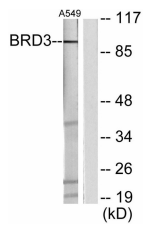
Images



Western Blot analysis of A549 cells using BRD3 Polyclonal Antibody cells nucleus.



Western Blot analysis of various cells using BRD3 Polyclonal Antibody cells nucleus.



Western blot analysis of lysates from A549 cells, using BRD3 Antibody. The lane on the right is blocked with the synthesized peptide.

Storage

-20°C for one year

501 Changsheng S Rd, Nanhu Dist, Jiaxing, Zhejiang, China

Tel: 86 21 31007137 | E-mail: save@bt-laboratory.com | www.bt-laboratory.com