

Brk Polyclonal Antibody

Description

Product type	Primary Antibody
Code	BT-AP00977
Host	Rabbit
Isotype	IgG
Size	20ul, 50ul, 100ul
Immunogen	The antiserum was produced against synthesized peptide derived from human Breast Tumor Kinase. AA range:402-451
Mol wt	51834
Species reactivity	Human
Clonality	Polyclonal
Recommended application	IF, ELISA
Concentration	1 mg/ml
Full name	Brk Antibody
Synonyms	PTK6; BRK; Protein-tyrosine kinase 6; Breast tumor kinase; Tyrosine-protein kinase BRK

This product is for research use only, not for use in human, therapeutic or diagnostic procedure.

Background

The protein encoded by PTK6 (protein tyrosine kinase 6) is a cytoplasmic nonreceptor protein kinase which may function as an intracellular signal transducer in epithelial tissues. Overexpression of PTK6 in mammary epithelial cells leads to sensitization of the cells to epidermal growth factor and results in a partially transformed phenotype. Expression of PTK6 has been detected at low levels in some breast tumors but not in normal breast tissue. The encoded protein has been shown to undergo autophosphorylation. Alternative splicing results in multiple transcript variants.

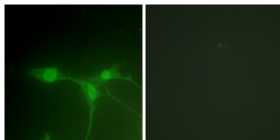
Recommended Dilution

IF: 1: 200 - 1: 1000

ELISA: 1: 20000

Not yet tested in other applications.

Images



Immunofluorescence analysis of NIH/3T3 cells, using Breast Tumor Kinase Antibody. The picture on the right is blocked with the synthesized peptide.

Storage

-20°C for one year