

BRMS-1 Polyclonal Antibody

Description

Product type	Primary Antibody
Code	BT-AP00979
Host	Rabbit
Isotype	IgG
Size	20ul, 50ul, 100ul
Immunogen	The antiserum was produced against synthesized peptide derived from the C-terminal region of human BRMS1. AA range:197-246
Mol wt	28461
Species reactivity	Human, Mouse, Rat
Clonality	Polyclonal
Recommended application	WB, ELISA
Concentration	1 mg/ml
Full name	BRMS-1 Antibody
Synonyms	BRMS1; Breast cancer metastasis-suppressor 1

This product is for research use only, not for use in human, therapeutic or diagnostic procedure.

Background

BRMS1 reduces the metastatic potential, but not the tumorigenicity, of human breast cancer and melanoma cell lines. Breast cancer metastasis-suppressor 1 encoded by this gene localizes primarily to the nucleus and is a component of the mSin3a family of histone deacetylase complexes (HDAC). The protein contains two coiled-coil motifs and several imperfect leucine zipper motifs. Alternative splicing results in two transcript variants encoding different isoforms.

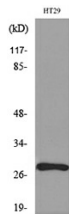
Recommended Dilution

WB: 1: 500 - 1: 2000

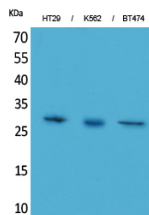
ELISA: 1: 20000

Not yet tested in other applications.

Images



Western blot analysis of lysate from HT29 cells, using BRMS1 Antibody.



Western Blot analysis of HT29, K562, BT474 cells using BRMS-1 Polyclonal Antibody. Secondary antibody was diluted at 1:20000

Storage

-20°C for one year

501 Changsheng S Rd, Nanhu Dist, Jiaxing, Zhejiang, China

Tel: 86 21 31007137 | E-mail: save@bt-laboratory.com | www.bt-laboratory.com