

Brp16 Polyclonal Antibody

Description

Product type	Primary Antibody
Code	BT-AP00983
Host	Rabbit
Isotype	IgG
Size	20ul, 50ul, 100ul
Immunogen	The antiserum was produced against synthesized peptide derived from human BRP16. AA range:251-300
Mol wt	42129
Species reactivity	Human, Mouse, Rat
Clonality	Polyclonal
Recommended application	WB, IHC-p, ELISA
Concentration	1 mg/ml
Full name	Brp16 Antibody
Synonyms	FAM203A; BRP16; C8orf30A; Protein FAM203A; Brain protein 16

This product is for research use only, not for use in human, therapeutic or diagnostic procedure.

Background

Brp16 is a 256 amino acid protein encoded by a gene on human chromosome 8. Made up of nearly 146 million bases, chromosome 8 encodes about 800 genes. Translocation of portions of chromosome 8 with amplifications of the c-Myc gene are found in some leukemias and lymphomas, and typically associated with a poor prognosis. Portions of chromosome 8 have been linked to schizophrenia and bipolar disorder. Trisomy 8, also known as Warkany syndrome 2, most often results in early miscarriage but is occasionally seen in a mosaic form in surviving patients who suffer to a varying degree from a number of symptoms including retarded mental and motor development, and certain facial and developmental defects. WRN is a DNA helicase encoded by chromosome 8 and shown defective in those with the early aging disorder Werner syndrome. Chromosome 8 is also associated with Pfeiffer syndrome, congenital hypothyroidism and Waardenburg syndrome.

Recommended Dilution

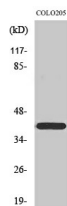
WB: 1: 500 - 1: 2000

IHC: 1: 100 - 1: 300

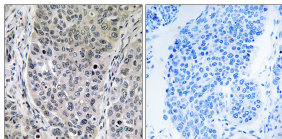
ELISA: 1: 40000

Not yet tested in other applications.

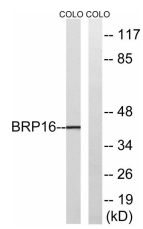
Images



Western Blot analysis of various cells using Brp16 Polyclonal Antibody



Immunohistochemistry analysis of paraffin-embedded human lung carcinoma tissue, using BRP16 Antibody. The picture on the right is blocked with the synthesized peptide.



Western blot analysis of lysates from COLO cells, using BRP16 Antibody. The lane on the right is blocked with the synthesized peptide.

Storage

-20°C for one year

501 Changsheng S Rd, Nanhu Dist, Jiaxing, Zhejiang, China

Tel: 86 21 31007137 | E-mail: save@bt-laboratory.com | www.bt-laboratory.com