

Brp44 Polyclonal Antibody

Description

Product type	Primary Antibody
Code	BT-AP00984
Host	Rabbit
Isotype	IgG
Size	20ul, 50ul, 100ul
Immunogen	The antiserum was produced against synthesized peptide derived from human BRP44. AA range:31-80
Mol wt	14279
Species reactivity	Human, Mouse, Rat
Clonality	Polyclonal
Recommended application	IHC-p, ELISA
Concentration	1 mg/ml
Full name	Brp44 Antibody
Synonyms	MPC2; BRP44; Mitochondrial pyruvate carrier 2; Brain protein 44

This product is for research use only, not for use in human, therapeutic or diagnostic procedure.

Background

MPC2 (Mitochondrial Pyruvate Carrier 2) is a Protein Coding gene. Among its related pathways are Metabolism and Respiratory electron transport, ATP synthesis by chemiosmotic coupling, and heat production by uncoupling proteins. GO annotations related to this gene include pyruvate transmembrane transporter activity. Mediates the uptake of pyruvate into mitochondria.

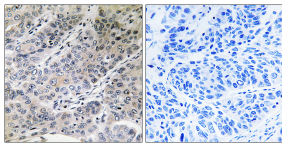
Recommended Dilution

IHC: 1: 100 - 1: 300

ELISA: 1: 40000

Not yet tested in other applications.

Images



Immunohistochemistry analysis of paraffin-embedded human lung carcinoma tissue, using BRP44 Antibody. The picture on the right is blocked with the synthesized peptide.

Storage

-20°C for one year

501 Changsheng S Rd, Nanhu Dist, Jiaxing, Zhejiang, China

Tel: 86 21 31007137 | E-mail: save@bt-laboratory.com | www.bt-laboratory.com