

BRS-3 Polyclonal Antibody

Description

Product type	Primary Antibody
Code	BT-AP00986
Host	Rabbit
Isotype	IgG
Size	20ul, 50ul, 100ul
Immunogen	The antiserum was produced against synthesized peptide derived from human BRS3. AA range:161-210
Mol wt	44411
Species reactivity	Human
Clonality	Polyclonal
Recommended application	WB, IHC-p, IF, ELISA
Concentration	1 mg/ml
Full name	BRS-3 Antibody
Synonyms	BRS3; Bombesin receptor subtype-3; BRS-3

This product is for research use only, not for use in human, therapeutic or diagnostic procedure.

Background

The protein (bombesin receptor subtype 3) encoded by BRS3 is a G protein-coupled membrane receptor that binds bombesin-like peptides. This binding results in activation of a phosphatidylinositol-calcium second messenger system, with physiological effects including regulation of metabolic rate, glucose metabolism, and hypertension.

Recommended Dilution

WB: 1: 500 - 1: 2000

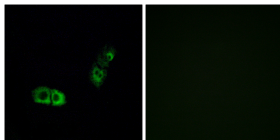
IHC: 1: 100 - 1: 300

IF: 1: 200 - 1: 1000

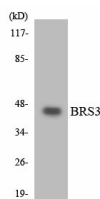
ELISA: 1: 10000

Not yet tested in other applications.

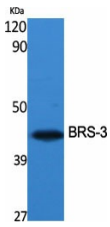
Images



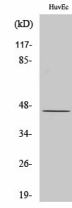
Immunofluorescence analysis of A549 cells, using BRS3 Antibody. The picture on the right is blocked with the synthesized peptide.



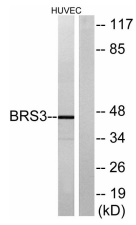
Western blot analysis of the lysates from HT-29 cells using BRS3 antibody.



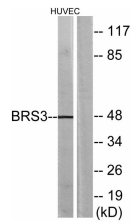
Western Blot analysis of various cells using BRS-3 Polyclonal Antibody



Western Blot analysis of HuvEc cells using BRS-3 Polyclonal Antibody



Western blot analysis of lysates from HUVEC cells, using BRS3 Antibody. The lane on the right is blocked with the synthesized peptide.



Western blot analysis of lysates from HUVEC cells, using BRS3 Antibody. The lane on the right is blocked with the synthesized peptide.

Storage

-20°C for one year

501 Changsheng S Rd, Nanhu Dist, Jiaxing, Zhejiang, China

Tel: 86 21 31007137 | E-mail: save@bt-laboratory.com | www.bt-laboratory.com