

BRWD3 Polyclonal Antibody

Description

| | |
|--------------------------------|---|
| Product type | Primary Antibody |
| Code | BT-AP00990 |
| Host | Rabbit |
| Isotype | IgG |
| Size | 20ul, 50ul, 100ul |
| Immunogen | The antiserum was produced against synthesized peptide derived from human BRWD3. AA range:1751-1800 |
| Mol wt | 203626 |
| Species reactivity | Human, Mouse |
| Clonality | Polyclonal |
| Recommended application | WB, IHC-p, ELISA |
| Concentration | 1 mg/ml |
| Full name | BRWD3 Antibody |
| Synonyms | BRWD3; Bromodomain and WD repeat-containing protein 3 |

This product is for research use only, not for use in human, therapeutic or diagnostic procedure.

Background

The bromodomain and WD repeat domain containing 3 encoded by BRWD3 contains a bromodomain and several WD repeats. It is thought to have a chromatin-modifying function, and may thus play a role in transcription. Mutations in this gene cause mental retardation X-linked type 93, which is also referred to as mental retardation X-linked with macrocephaly. This gene is also associated with translocations in patients with B-cell chronic lymphocytic leukemia.

Recommended Dilution

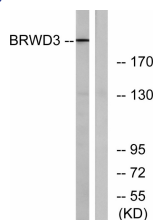
WB: 1: 500 - 1: 2000

IHC: 1: 100 - 1: 300

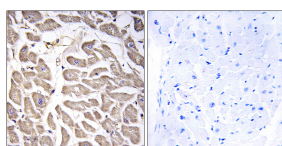
ELISA: 1: 40000

Not yet tested in other applications.

Images



Western blot analysis of lysates from COLO cells, using BRWD3 Antibody. The lane on the right is blocked with the synthesized peptide.



Immunohistochemistry analysis of paraffin-embedded human heart tissue, using BRWD3 Antibody. The picture on the right is blocked with the synthesized peptide.

Storage

-20°C for one year

501 Changsheng S Rd, Nanhu Dist, Jiaxing, Zhejiang, China

Tel: 86 21 31007137 | E-mail: save@bt-laboratory.com | www.bt-laboratory.com