

BST-2 Polyclonal Antibody

Description

Product type	Primary Antibody
Code	BT-AP00995
Host	Rabbit
Isotype	IgG
Size	20ul, 50ul, 100ul
Immunogen	The antiserum was produced against synthesized peptide derived from human BST2. AA range:81-130
Mol wt	19769
Species reactivity	Human
Clonality	Polyclonal
Recommended application	WB, ELISA
Concentration	1 mg/ml
Full name	BST-2 Antibody
Synonyms	BST2; Bone marrow stromal antigen 2; BST-2; HM1.24 antigen; Tetherin; CD antigen CD317

This product is for research use only, not for use in human, therapeutic or diagnostic procedure.

Background

Bone marrow stromal cells are involved in the growth and development of B-cells. The specific function of the protein encoded by the bone marrow stromal cell antigen 2 is undetermined; however, this protein may play a role in pre-B-cell growth and in rheumatoid arthritis.

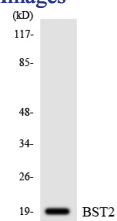
Recommended Dilution

WB: 1: 500 - 1: 2000

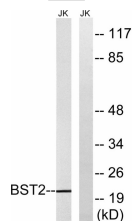
ELISA: 1: 5000

Not yet tested in other applications.

Images



Western blot analysis of the lysates from 293 cells using BST2 antibody.



Western blot analysis of lysates from Jurkat cells, using BST2 Antibody. The lane on the right is blocked with the synthesized peptide.

Storage

-20°C for one year