

BSX Polyclonal Antibody

Description

Product type	Primary Antibody
Code	BT-AP00997
Host	Rabbit
Isotype	IgG
Size	20ul, 50ul, 100ul
Immunogen	Synthesized peptide derived from BSX . at AA range: 150-230
Mol wt	25933
Species reactivity	Human, Mouse, Rat
Clonality	Polyclonal
Recommended application	WB, ELISA
Concentration	1 mg/ml
Full name	BSX Antibody
Synonyms	BSX; BSX1; Brain-specific homeobox protein homolog

This product is for research use only, not for use in human, therapeutic or diagnostic procedure.

Background

BSX (Brain Specific Homeobox) is a Protein Coding gene. Diseases associated with BSX include jacobsen syndrome. GO annotations related to this gene include transcription factor activity, sequence-specific DNA binding and sequence-specific DNA binding. An important paralog of this gene is DLX5.

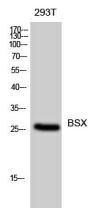
Recommended Dilution

WB: 1: 500 - 1: 2000

ELISA: 1: 5000

Not yet tested in other applications.

Images



Western Blot analysis of 293T cells using BSX Polyclonal Antibody diluted at 1:500

Storage

-20°C for one year