

BTBD6 Polyclonal Antibody

Description

Product type	Primary Antibody
Code	BT-AP00999
Host	Rabbit
Isotype	IgG
Size	20ul, 50ul, 100ul
Immunogen	The antiserum was produced against synthesized peptide derived from human BTBD6. AA range:91-140
Mol wt	45925
Species reactivity	Human, Mouse
Clonality	Polyclonal
Recommended application	WB, IHC-p, ELISA
Concentration	1 mg/ml
Full name	BTBD6 Antibody
Synonyms	BTBD6; BDPL; BTB/POZ domain-containing protein 6; Lens BTB domain protein

This product is for research use only, not for use in human, therapeutic or diagnostic procedure.

Background

BTBD6 (BTB/POZ domain-containing protein 6), also known as BDPL or lens BTB domain protein, is a 410 amino acid protein that contains one BTB/POZ domain and is specifically expressed in the lens. The BTB/POZ domain mediates homomeric and heteromeric POZ-POZ interactions and is common to transcriptional regulators involved in chromatin modeling. In several BTB/POZ containing proteins, including BCL-6 and the promyelocytic leukemia zinc-finger (PLZF) oncoprotein, this domain interacts with the SMRT/N-CoR-mSin3A HDAC complex and is directly involved in repressing and silencing gene transcription. When this domain is deleted, as with the oncogenic PLZF-RAR chimera of promyelocytic leukemias, this transcriptional repression is attenuated. This suggests that BTBD6 may play a role in transcription regulation in the lens.

Recommended Dilution

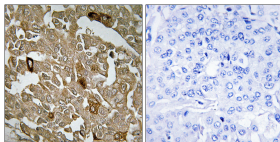
WB: 1: 500 - 1: 2000

IHC: 1: 100 - 1: 300

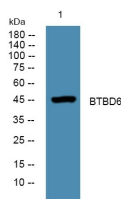
ELISA: 1: 10000

Not yet tested in other applications.

Images



Immunohistochemistry analysis of paraffin-embedded human breast carcinoma tissue, using BTBD6 Antibody. The picture on the right is blocked with the synthesized peptide.



Western blot analysis of lysates from SH-SY5Y cells, primary antibody was diluted at 1:1000, 4° over night

Storage

-20°C for one year

501 Changsheng S Rd, Nanhu Dist, Jiaxing, Zhejiang, China

Tel: 86 21 31007137 | E-mail: save@bt-laboratory.com | www.bt-laboratory.com