

IRS-1(phospho Ser636) Polyclonal Antibody

Description

Product type	Primary Antibody
Code	BT-AP01000
Host	Rabbit
Isotype	IgG
Size	100ul, 50ul, 20ul
Immunogen	The antiserum was produced against synthesized peptide derived from human IRS-1 around the phosphorylation site of Ser636. AA range:603-652
Mol wt	131591
Species reactivity	Human, Mouse, Rat
Clonality	Polyclonal
Recommended application	WB, IHC-p, IF, ICC, ELISA
Concentration	1 mg/ml
Full name	Insulin receptor substrate 1
Synonyms	Insulin receptor substrate 1; IRS1; Insulin receptor substrate 1; IRS-1

This product is for research use only, not for use in human, therapeutic or diagnostic procedure.

Background

This gene encodes a protein which is phosphorylated by insulin receptor tyrosine kinase. Mutations in this gene are associated with type II diabetes and susceptibility to insulin resistance.

Recommended Dilution

WB: 1: 500 - 1: 2000

IHC-p: 1: 100 - 1: 300

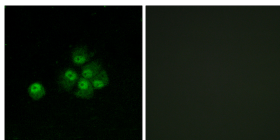
IF: 1: 200 - 1: 1000

ICC: 1: 200 - 1: 1000

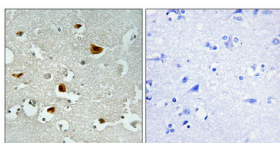
ELISA: 1: 20000

Not yet tested in other applications.

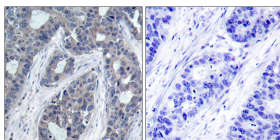
Images



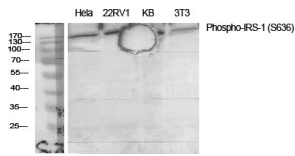
Immunofluorescence analysis of MCF7 cells, using IRS-1 (Phospho-Ser636) Antibody. The picture on the right is blocked with the phospho peptide.



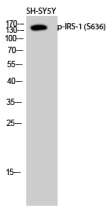
Immunohistochemical analysis of paraffin-embedded Human brain. Antibody was diluted at 1:100(4°C overnight). High-pressure and temperature Tris-EDTA,pH8.0 was used for antigen retrieval. Negative control (right) obtained from antibody was pre-absorbed by immunogen peptide.



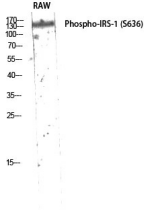
Immunohistochemistry analysis of paraffin-embedded human breast carcinoma tissue, using Transglutaminase 2 Antibody. The picture on the right is blocked with the synthesized peptide.



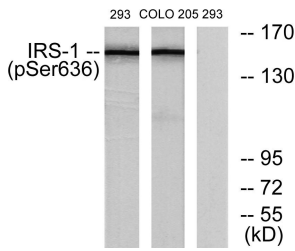
Western Blot analysis of various cells using Phospho-IRS-1 (S636) Polyclonal Antibody diluted at 1:2000



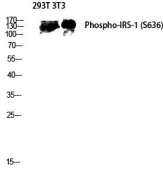
Western Blot analysis of SH-SY5Y cells using Phospho-IRS-1 (S636) Polyclonal Antibody diluted at 1:2000



Western Blot analysis of RAW using Phospho-IRS-1 (S636) Polyclonal Antibody diluted at 1:2000



Western blot analysis of 293T 3T3 lysis using Phospho-IRS-1 (S636) antibody. Antibody was diluted at 1:2000



Western blot analysis of lysates from 293 cells and COLO205 cells, using IRS-1 (Phospho-Ser636) Antibody. The lane on the right is blocked with the phospho peptide.

Storage

-20°C for 1 year

501 Changsheng S Rd, Nanhu Dist, Jiaxing, Zhejiang, China

Tel: 86 21 31007137 | E-mail: save@bt-laboratory.com | www.bt-laboratory.com