

IRS-1(phospho Tyr896) Polyclonal Antibody

Description

Product type	Primary Antibody
Code	BT-AP01002
Host	Rabbit
Isotype	IgG
Size	100ul, 50ul, 20ul
Immunogen	The antiserum was produced against synthesized peptide derived from human IRS-1 around the phosphorylation site of Tyr896. AA range:862-911
Mol wt	131591
Species reactivity	Human, Mouse, Rat
Clonality	Polyclonal
Recommended application	WB, ELISA
Concentration	1 mg/ml
Full name	Insulin receptor substrate 1
Synonyms	Insulin receptor substrate 1; IRS1; Insulin receptor substrate 1; IRS-1

This product is for research use only, not for use in human, therapeutic or diagnostic procedure.

Background

This gene encodes a protein which is phosphorylated by insulin receptor tyrosine kinase. Mutations in this gene are associated with type II diabetes and susceptibility to insulin resistance.

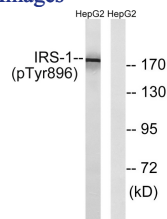
Recommended Dilution

WB: 1: 500 - 1: 2000

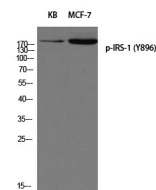
ELISA: 1: 40000

Not yet tested in other applications.

Images



Western blot analysis of KB MCF-7 using p-IRS-1 (Y896) antibody. Antibody was diluted at 1:500



Western blot analysis of lysates from HepG2 cells treated with Na₃VO₄ 0.3mM 40', using IRS-1 (Phospho-Tyr896) Antibody. The lane on the right is blocked with the phospho peptide.

Storage

-20°C for 1 year

