

## BTF3L4 Polyclonal Antibody

### Description

<b>Product type</b>	Primary Antibody
<b>Code</b>	BT-AP01003
<b>Host</b>	Rabbit
<b>Isotype</b>	IgG
<b>Size</b>	20ul, 50ul, 100ul
<b>Immunogen</b>	The antiserum was produced against synthesized peptide derived from human BTF3L4. AA range:94-143
<b>Mol wt</b>	17271
<b>Species reactivity</b>	Human, Mouse
<b>Clonality</b>	Polyclonal
<b>Recommended application</b>	IHC-p, ELISA
<b>Concentration</b>	1 mg/ml
<b>Full name</b>	BTF3L4 Antibody
<b>Synonyms</b>	BTF3L4; Transcription factor BTF3 homolog 4; Basic transcription factor 3-like 4

**This product is for research use only, not for use in human, therapeutic or diagnostic procedure.**

### Background

BTF3L4 (Basic Transcription Factor 3-Like 4) is a Protein Coding gene. An important paralog of this gene is BTF3.

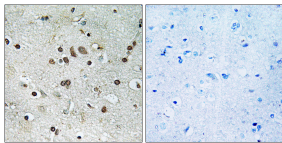
### Recommended Dilution

IHC: 1: 100 - 1: 300

ELISA: 1: 40000

Not yet tested in other applications.

### Images



Immunohistochemistry analysis of paraffin-embedded human brain tissue, using BTF3L4 Antibody. The picture on the right is blocked with the synthesized peptide.

### Storage

-20°C for one year

501 Changsheng S Rd, Nanhu Dist, Jiaxing, Zhejiang, China

Tel: 86 21 31007137 | E-mail: [save@bt-laboratory.com](mailto:save@bt-laboratory.com) | [www.bt-laboratory.com](http://www.bt-laboratory.com)