

Bub1 Polyclonal Antibody

Description

Product type	Primary Antibody
Code	BT-AP01008
Host	Rabbit
Isotype	IgG
Size	20ul, 50ul, 100ul
Immunogen	The antiserum was produced against synthesized peptide derived from human BUB1. AA range:251-300
Mol wt	122375
Species reactivity	Human, Mouse
Clonality	Polyclonal
Recommended application	IHC-p, ELISA
Concentration	1 mg/ml
Full name	Bub1 Antibody
Synonyms	BUB1; BUB1L; Mitotic checkpoint serine/threonine-protein kinase BUB1; hBUB1; BUB1A

This product is for research use only, not for use in human, therapeutic or diagnostic procedure.

Background

BUB1 (BUB1 mitotic checkpoint serine/threonine kinase) encodes a serine/threonine-protein kinase that play a central role in mitosis. The encoded protein functions in part by phosphorylating members of the mitotic checkpoint complex and activating the spindle checkpoint. This protein also plays a role in inhibiting the activation of the anaphase promoting complex/cyclosome. This protein may also function in the DNA damage response. Mutations in BUB1 have been associated with aneuploidy and several forms of cancer. Alternate splicing results in multiple transcript variants.

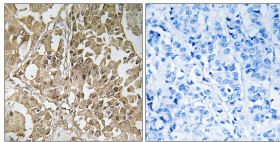
Recommended Dilution

IHC: 1: 100 - 1: 300

ELISA: 1: 10000

Not yet tested in other applications.

Images



Immunohistochemistry analysis of paraffin-embedded human breast carcinoma tissue, using BUB1 Antibody. The picture on the right is blocked with the synthesized peptide.

Storage

-20°C for one year