

BUB1 Polyclonal Antibody

Description

Product type	Primary Antibody
Code	BT-AP01009
Host	Rabbit
Isotype	IgG
Size	20ul, 50ul, 100ul
Immunogen	The antiserum was produced against synthesized peptide derived from human BUB1. AA range:781-830
Mol wt	122375
Species reactivity	Human
Clonality	Polyclonal
Recommended application	WB, ELISA
Concentration	1 mg/ml
Full name	BUB1 Antibody
Synonyms	BUB1; BUB1L; Mitotic checkpoint serine/threonine-protein kinase BUB1; hBUB1; BUB1A

This product is for research use only, not for use in human, therapeutic or diagnostic procedure.

Background

BUB1 (BUB1 mitotic checkpoint serine/threonine kinase) encodes a serine/threonine-protein kinase that play a central role in mitosis. The encoded protein functions in part by phosphorylating members of the mitotic checkpoint complex and activating the spindle checkpoint. This protein also plays a role in inhibiting the activation of the anaphase promoting complex/cyclosome. This protein may also function in the DNA damage response. Mutations in BUB1 have been associated with aneuploidy and several forms of cancer. Alternate splicing results in multiple transcript variants.

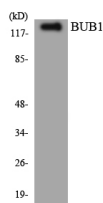
Recommended Dilution

WB: 1: 500 - 1: 2000

ELISA: 1: 40000

Not yet tested in other applications.

Images



Western blot analysis of the lysates from HUVEC cells using BUB1 antibody.

Storage

-20°C for one year