

C/EBP Delta/Epsilon Polyclonal Antibody

Description

Product type	Primary Antibody
Code	BT-AP01020
Host	Rabbit
Isotype	IgG
Size	20ul, 50ul, 100ul
Immunogen	The antiserum was produced against synthesized peptide derived from human CEBPD/E. AA range:171-220
Mol wt	28467/30603
Species reactivity	Human, Mouse, Rat
Clonality	Polyclonal
Recommended application	WB, IHC-p, IF, ELISA
Concentration	1 mg/ml
Full name	C/EBP delta/epsilon Antibody
Synonyms	CEBPD; CCAAT/enhancer-binding protein delta; C/EBP delta; Nuclear factor NF-IL6-beta; NF-IL6-beta; CEBPE; CCAAT/enhancer-binding protein epsilon; C/EBP epsilon

This product is for research use only, not for use in human, therapeutic or diagnostic procedure.

Background

The CCAAT/enhancer binding protein delta encoded by CEBPD is a bZIP transcription factor which can bind as a homodimer to certain DNA regulatory regions. It can also form heterodimers with the related protein CEBP-alpha. The encoded protein is important in the regulation of genes involved in immune and inflammatory responses, and may be involved in the regulation of genes associated with activation and/or differentiation of macrophages. The cytogenetic location of this locus has been reported as both 8p11 and 8q11.

Recommended Dilution

WB: 1: 500 - 1: 2000

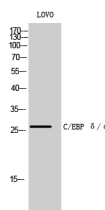
IHC: 1: 100 - 1: 300

IF: 1: 200 - 1: 1000

ELISA: 1: 20000

Not yet tested in other applications.

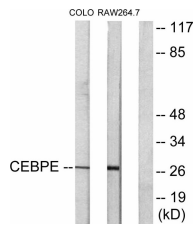
Images



Western Blot analysis of LOVO cells using C/EBP δ/ϵ Polyclonal Antibody diluted at 1:500 cells nucleus.



Western Blot analysis of RAT-MUSCLE cells using C/EBP δ/ϵ Polyclonal Antibody diluted at 1:500 cells nucleus.



Western blot analysis of lysates from LOVO and RAW264.7 cells, using CEBPD/E Antibody. The lane on the right is blocked with the synthesized peptide.

Storage

-20°C for one year

501 Changsheng S Rd, Nanhu Dist, Jiaxing, Zhejiang, China

Tel: 86 21 31007137 | E-mail: save@bt-laboratory.com | www.bt-laboratory.com